



# EasySet\_OPOS Installation Guide

---

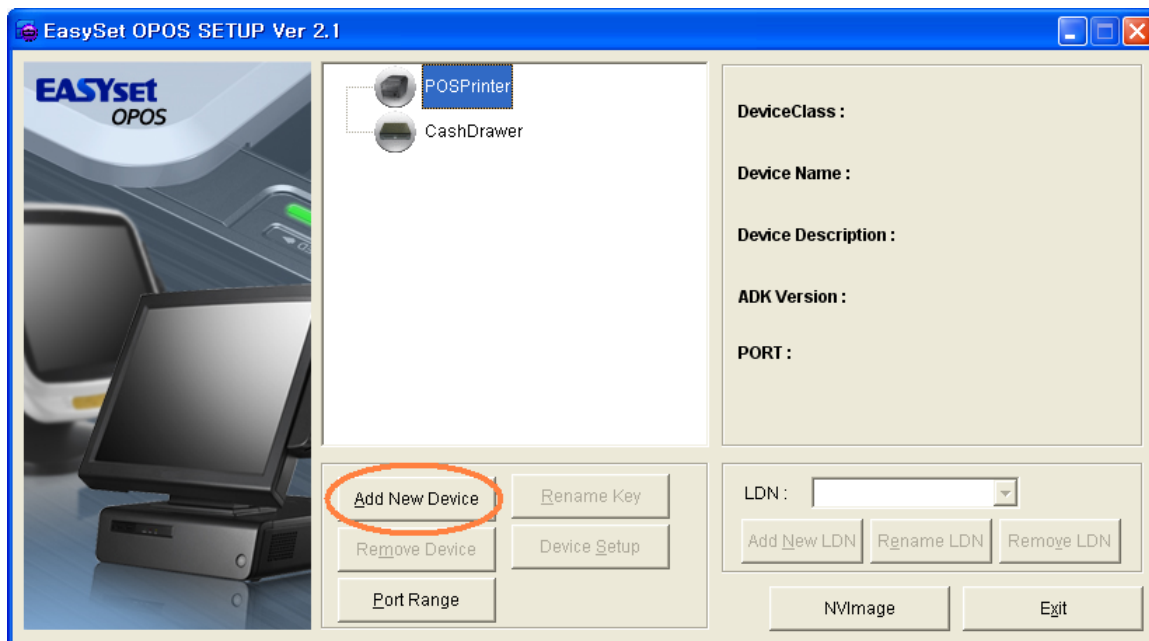
## 1. Installation

Search EasySet OPOS driver file in CD and install the driver.

Complete the installation of OPOS driver.

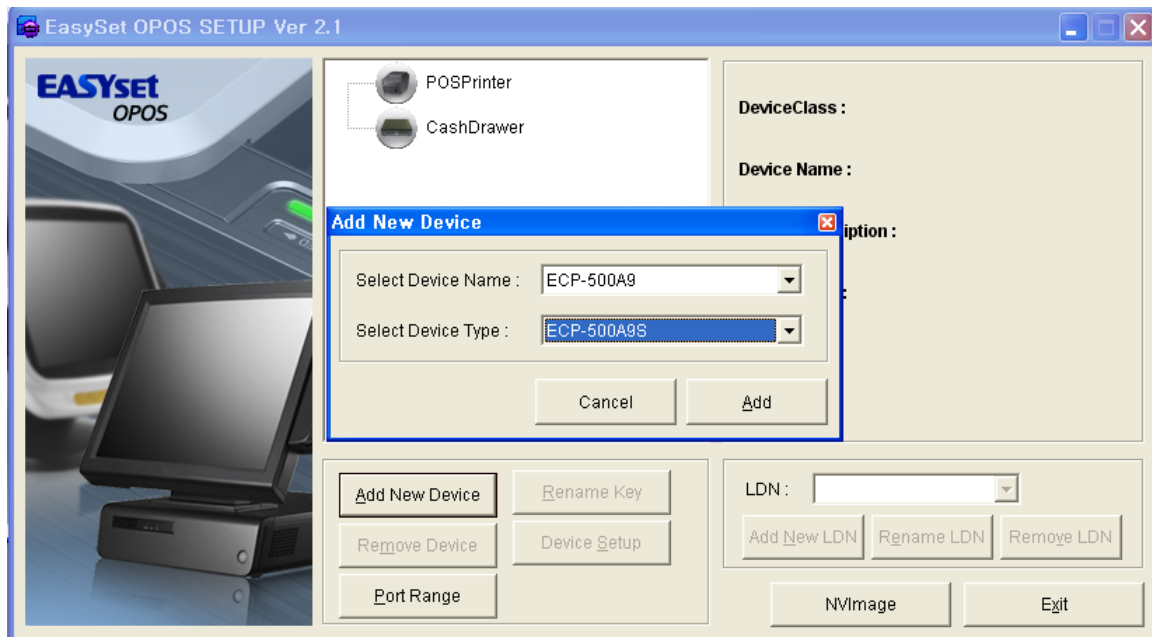
Run [Start] – [Program] – [EasySet] – [OPOS] – Execute EasySet\_OPOS program.

## 2. Setting



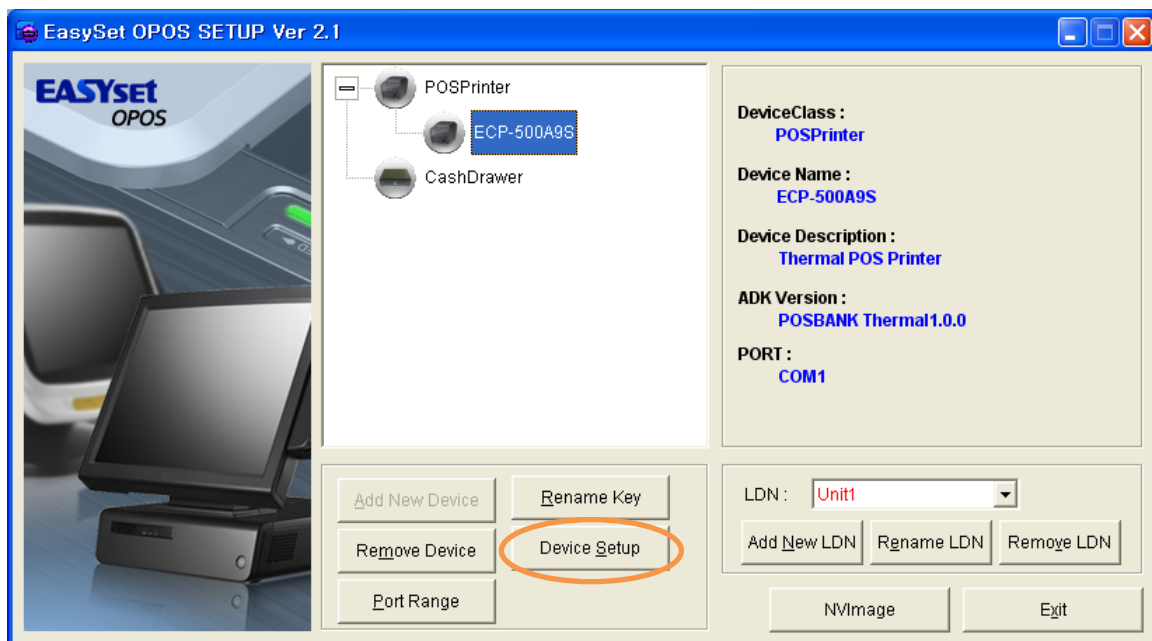
- Add your requested printer with "Add New Device" clicking.

---

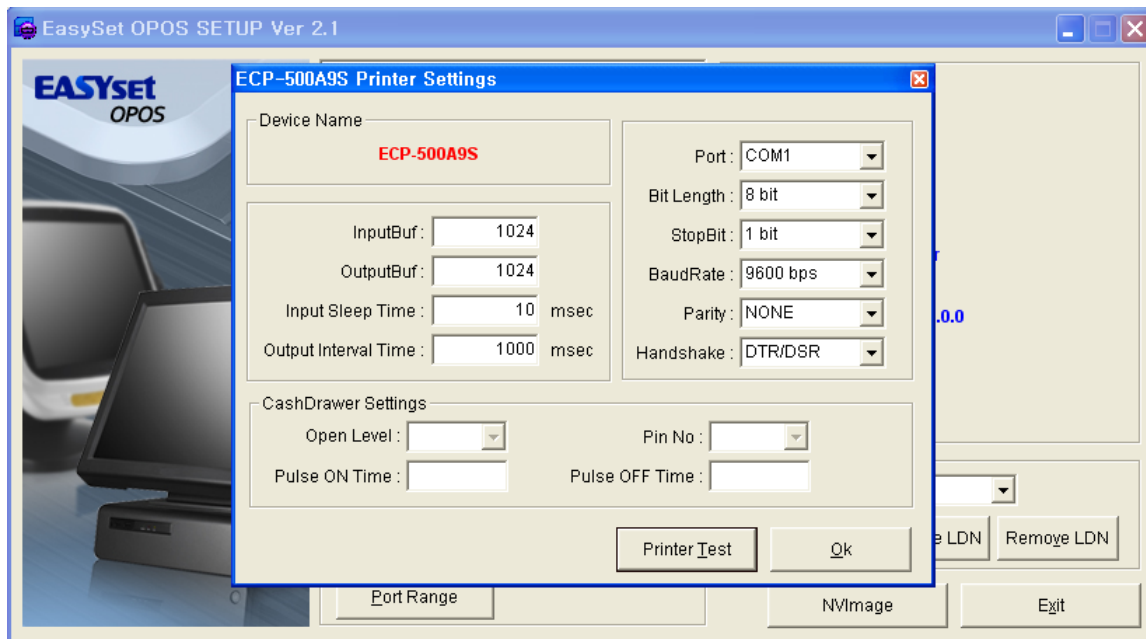


Select device name and type and click "Add".

[Select Device Type : Selectable among Serial, Parallel and USB]



Choose added printer and enter "Device Setup".



Put port details in the setting page and press [OK] to complete printer setting.

※ We recommend you to set Cash Drawer with the same as the above procedure.

---