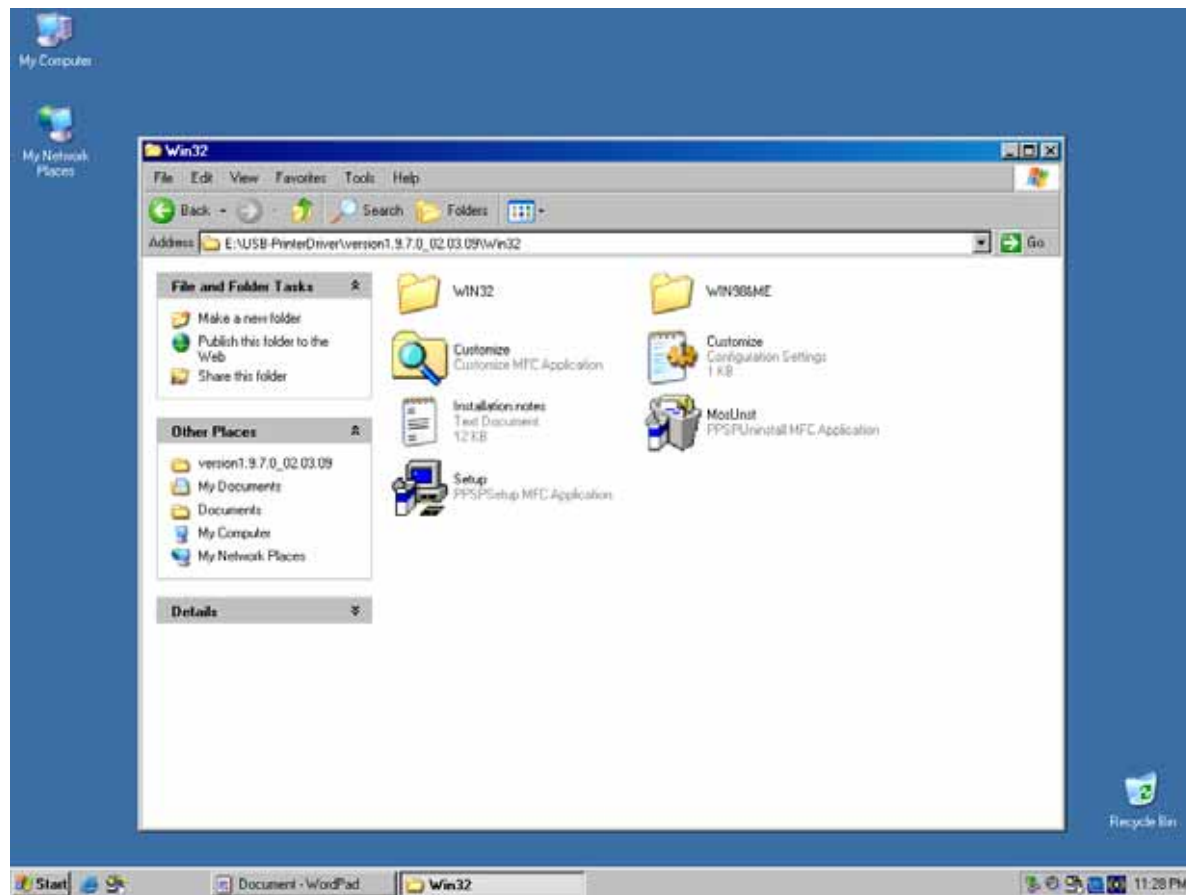
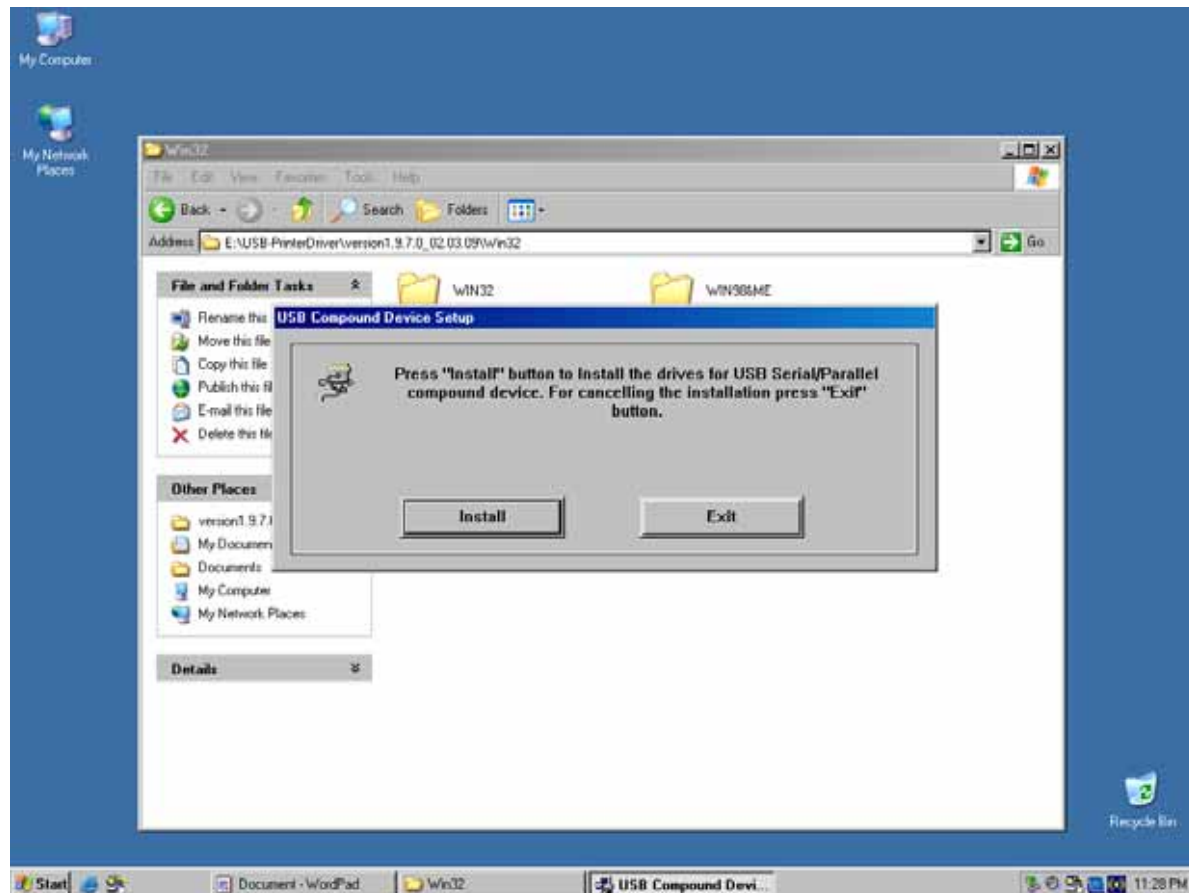


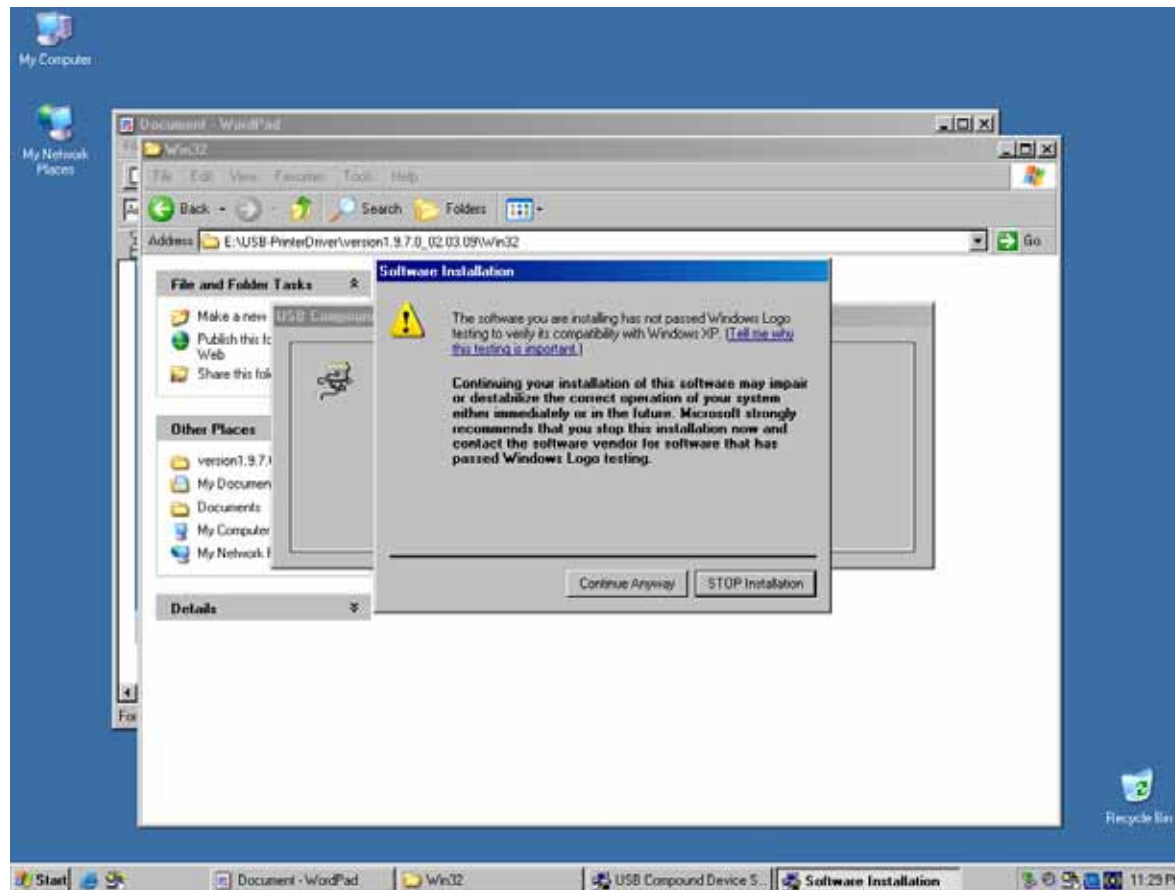
## USB Driver Installation Guide



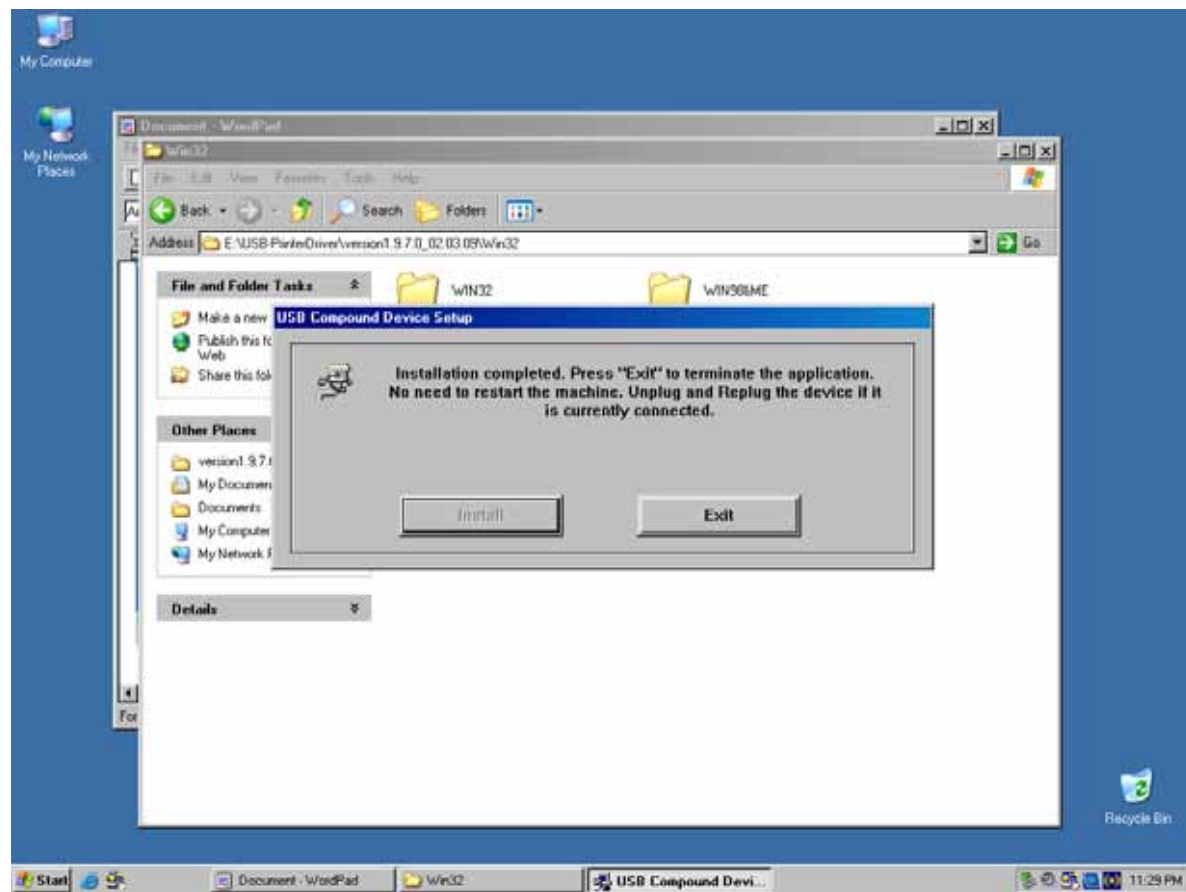
Run [Setup.exe]



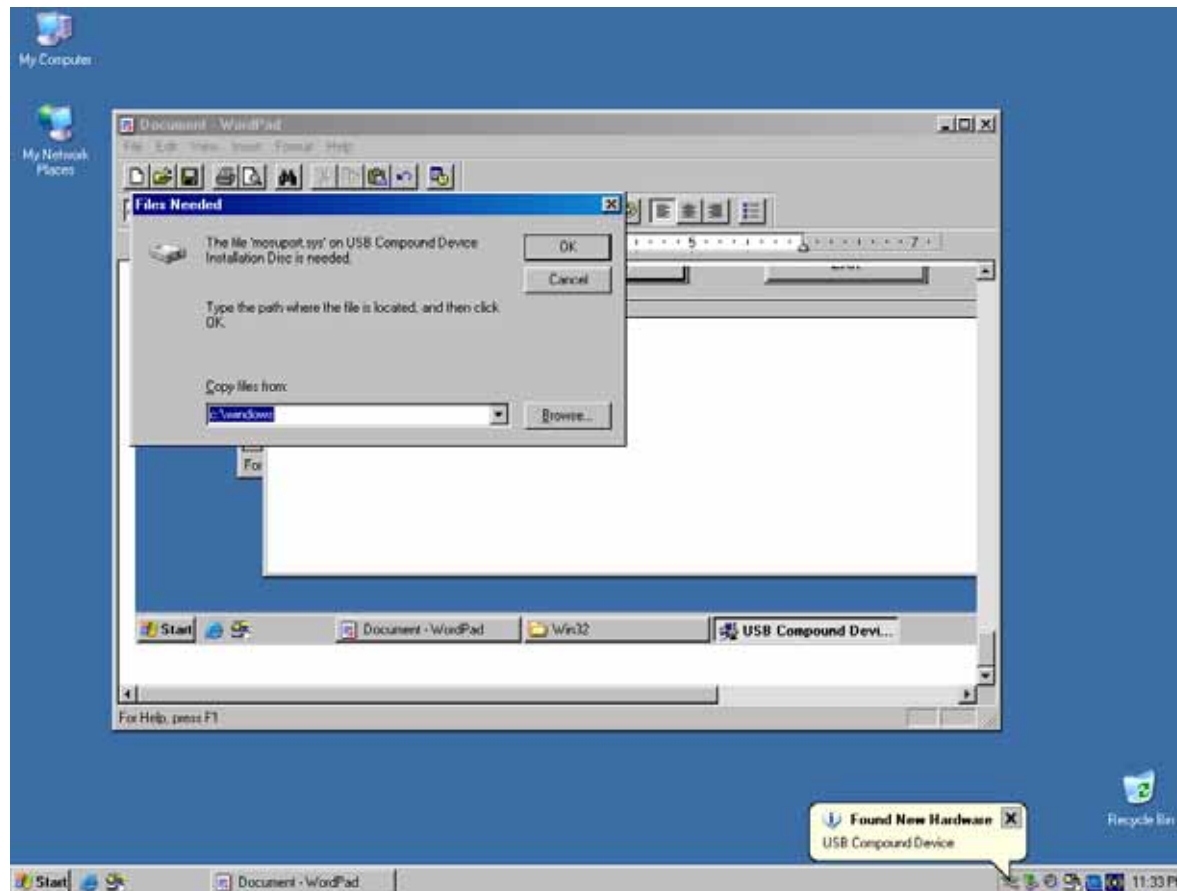
Click "Install".



Click "Continue Anyway".



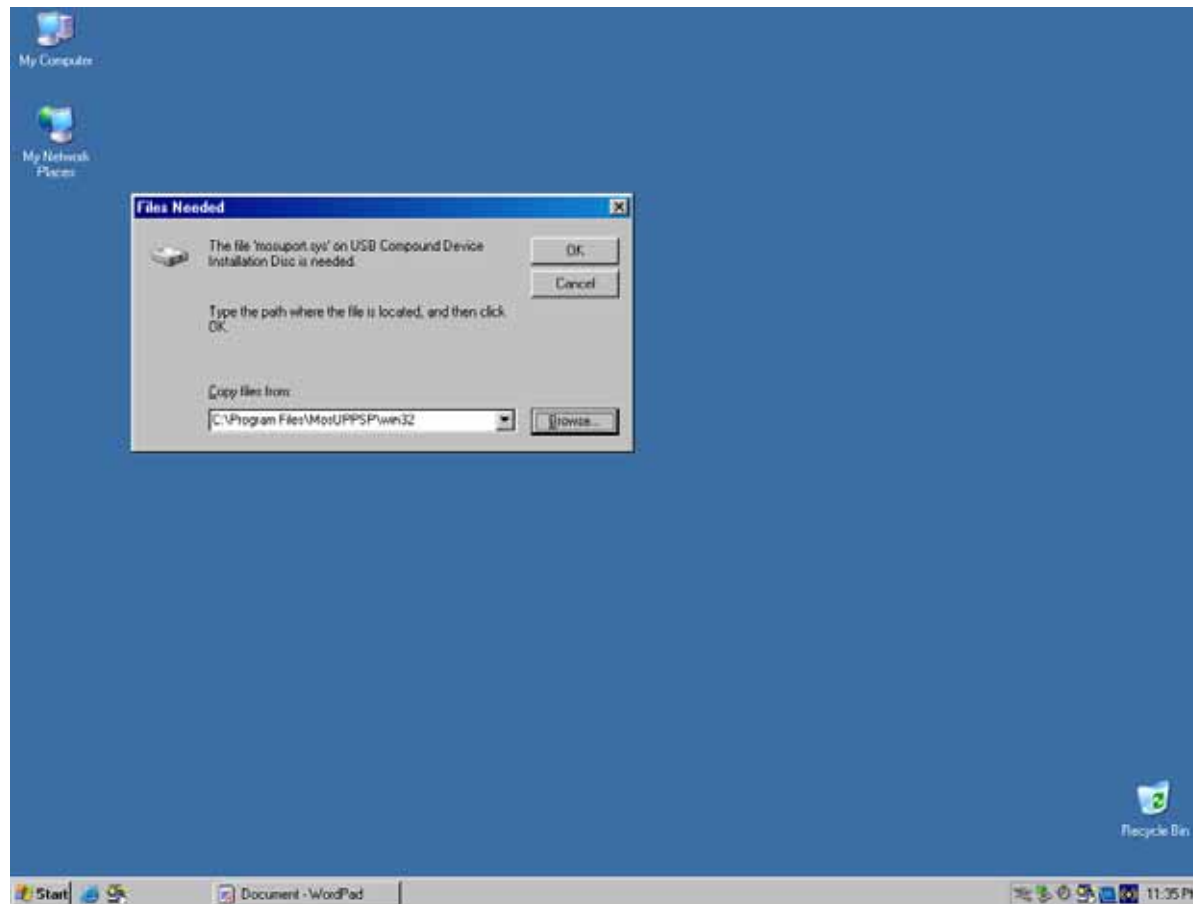
Click "Exit".



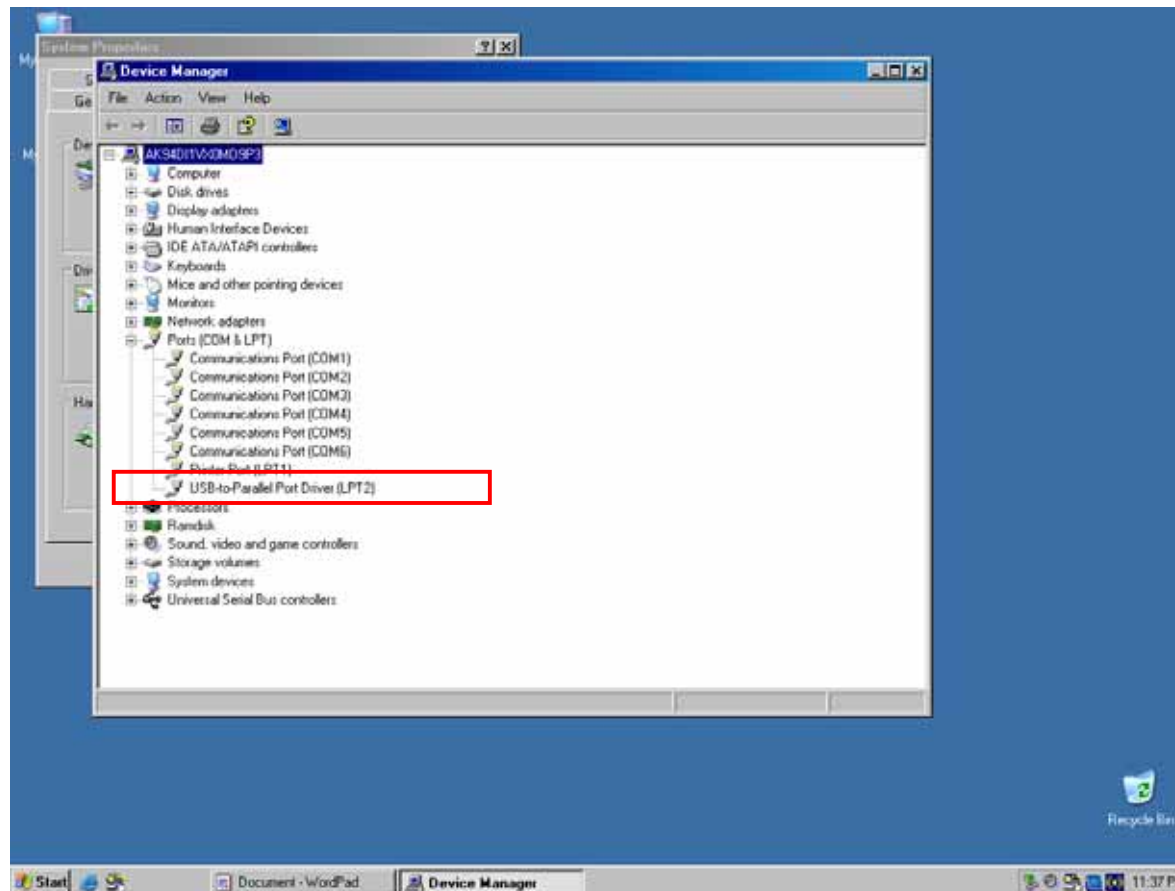
Connect the printer to the host computer with a USB Cable

After connecting printer and host computer, above message will be showing.  
(Depend on OS, step 5 ~ step 6 can be skipped)

Click "Browser" If a windows message asks for the path where the driver file is located



Click "Program Files" in C hard disk drive => "MosUPPSP" => "win32" => mosuport.



You can see "USB-to-Parallel Port [LPT]" if you installed successfully.

**\*\* IMPORTANT**

Please use same USB port all the time. Otherwise, additional LPT port will be created whenever you plug to the different USB port.