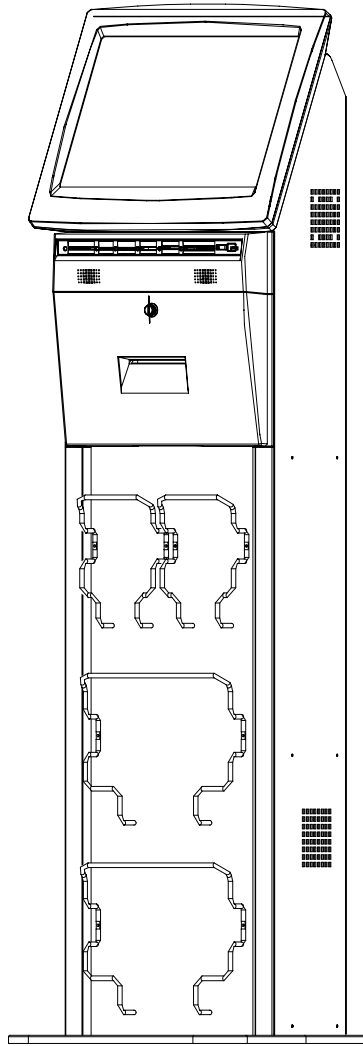


# K892 User Manual



---

P/N: 48201250  
2006 August V1.0

Copyright 2006 August  
All Rights Reserved  
Manual Version 1.0

The information contained in this document is subject to change without notice. We make no warranty of any kind with regard to this material, including, but not limited to, the implied warranties of merchantability and fitness for a particular purpose. We shall not be liable for errors contained herein or for incidental or consequential damages in connection with the furnishing, performance, or use of this material.

This document contains proprietary information that is protected by copyright. All rights are reserved. No part of this document may be photocopied, reproduced or translated to another language without the prior written consent of the manufacturer.

**TRADEMARK**

Intel®, Pentium® and MMX are registered trademarks of Intel® Corporation.  
Microsoft® and Windows® are registered trademarks of Microsoft Corporation.  
ELO Touch is the registered trademark of ELO Touch Systems.

# Safety

## IMPORTANT SAFETY INSTRUCTIONS

1. To disconnect the machine from the electrical power supply, turn off the power switch and remove the power cord plug from the wall socket. The wall socket must be easily accessible and in close proximity to the machine.
2. Read these instructions carefully. Save these instructions for future reference.
3. Follow all warnings and instructions marked on the product.
4. Do not use this product near water.
5. Do not place this product on an unstable cart, stand, or table. The product may fall, causing serious damage to the product.
6. Slots and openings in the cabinet and the back or bottom are provided for ventilation; to ensure reliable operation of the product and to protect it from overheating. These openings must not be blocked or covered. The openings should never be blocked by placing the product on a bed, sofa, rug, or other similar surface. This product should never be placed near or over a radiator or heat register, or in a built-in installation unless proper ventilation is provided.
7. This product should be operated from the type of power indicated on the marking label. If you are not sure of the type of power available, consult your dealer or local power company.
8. Do not allow anything to rest on the power cord. Do not locate this product where persons will walk on the cord.
9. Never push objects of any kind into this product through cabinet slots as they may touch dangerous voltage points or short out parts that could result in a fire or electric shock. Never spill liquid of any kind on the product.

## CE MARK



This device complies with the requirements of the EEC directive 89/336/EEC with regard to "Electromagnetic compatibility" and 73/23/EEC "Low Voltage Directive".

## FCC

This device complies with part 15 of the FCC rules. Operation is subject to the following two conditions:

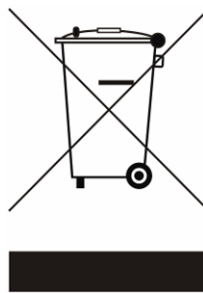
- (1) This device may not cause harmful interference
- (2) This device must accept any interference received, including interference that may cause undesired operation.

## **CAUTION ON LITHIUM BATTERIES**

There is a danger of explosion if the battery is replaced incorrectly. Replace only with the same or equivalent type recommended by the manufacturer. Discard used batteries according to the manufacturer's instructions.

## **LEGISLATION AND WEEE SYMBOL**

**2002/96/EC Waste Electrical and Electronic Equipment Directive on the treatment, collection, recycling and disposal of electric and electronic devices and their components.**



The crossed dustbin symbol on the device means that it should not be disposed of with other household wastes at the end of its working life. Instead, the device should be taken to the waste collection centers for activation of the treatment, collection, recycling and disposal procedure.

To prevent possible harm to the environment or human health from uncontrolled waste disposal, please separate this from other types of wastes and recycle it responsibly to promote the sustainable reuse of material resources.

Household users should contact either the retailer where they purchased this product, or their local government office, for details of where and how they can take this item for environmentally safe recycling.

Business users should contact their supplier and check the terms and conditions of the purchase contract.

This product should not be mixed with other commercial wastes for disposal.

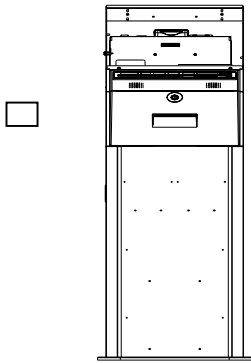
# Table of Contents

1. CHECKLIST.....	6
1.1. STANDARD ITEMS (BIG BOX).....	6
1.2. STANDARD ITEMS (SMALL BOX).....	6
2. SYSTEM VIEW.....	8
3. MEDIA CARD READER.....	9
4. I/O CONNECTORS (MOTHERBOARD) VIEW.....	10
5. DRIVERS INSTALLATION.....	11
5.1. DRIVER LIST.....	11
5.2. CHIPSET DRIVER INSTALLATION.....	11
5.3. USB 2.0 DRIVER INSTALLATION.....	13
5.4. VGA DRIVER INSTALLATION.....	15
5.5. ELO TOUCH DRIVER INSTALLATION.....	17
5.6. LAN DRIVER INSTALLATION.....	20
5.7. AUDIO DRIVER INSTALLATION.....	21
5.8. BLUETOOTH DRIVER INSTALLATION.....	21
5.9. EPSON-BA-500 THERMAL PRINTER DRIVER INSTALLATION.....	23
6. SYSTEM INSTALLATION.....	24
6.1. HDD INSTALLATION.....	24
6.2. LCD PANEL INSTALLATION.....	28
6.3. THERMAL PRINTER INSTALLATION.....	29
7. SYSTEM REPLACEMENT.....	31
7.1. LOAD THE PAPER OF THE THERMAL PRINTER.....	31
7.2. MOTHERBOARD REPLACEMENT.....	33
7.3. CONTROL BOARD AND INVERTER BOARD REPLACEMENT.....	36
7.4. LCD AND TOUCH SCREEN REPLACEMENT.....	39
8. SPECIFICATION.....	41
9. JUMPER SETTINGS.....	43
10. BIOS SETTING.....	47
11. EPSON-BA-500 THERMAL PRINTER DIP SWITCH SETTINGS.....	50

# 1. Checklist

Carefully take the system out of the carton. The package includes the following items:

## 1.1. Standard Items (Big Box)



a. System (1)

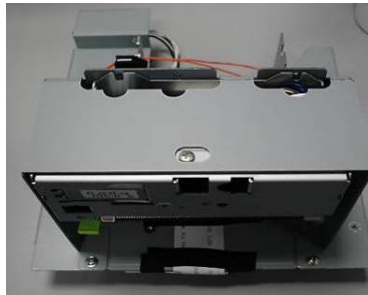


b. Rubber Foot (2)

## 1.2. Standard Items (Small Box)



c. HDD (1)



d. Thermal Printer (1)



e. LCD Panel (1)



f. Holder (1)



e. Driver CD (1)



f. Screws (4)  
<for Rubber Foot>



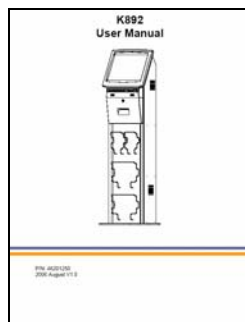
g. Screws (2) <for HDD>



h. Key (2)



i. NI Screws (4)  
<for LCD Panel>

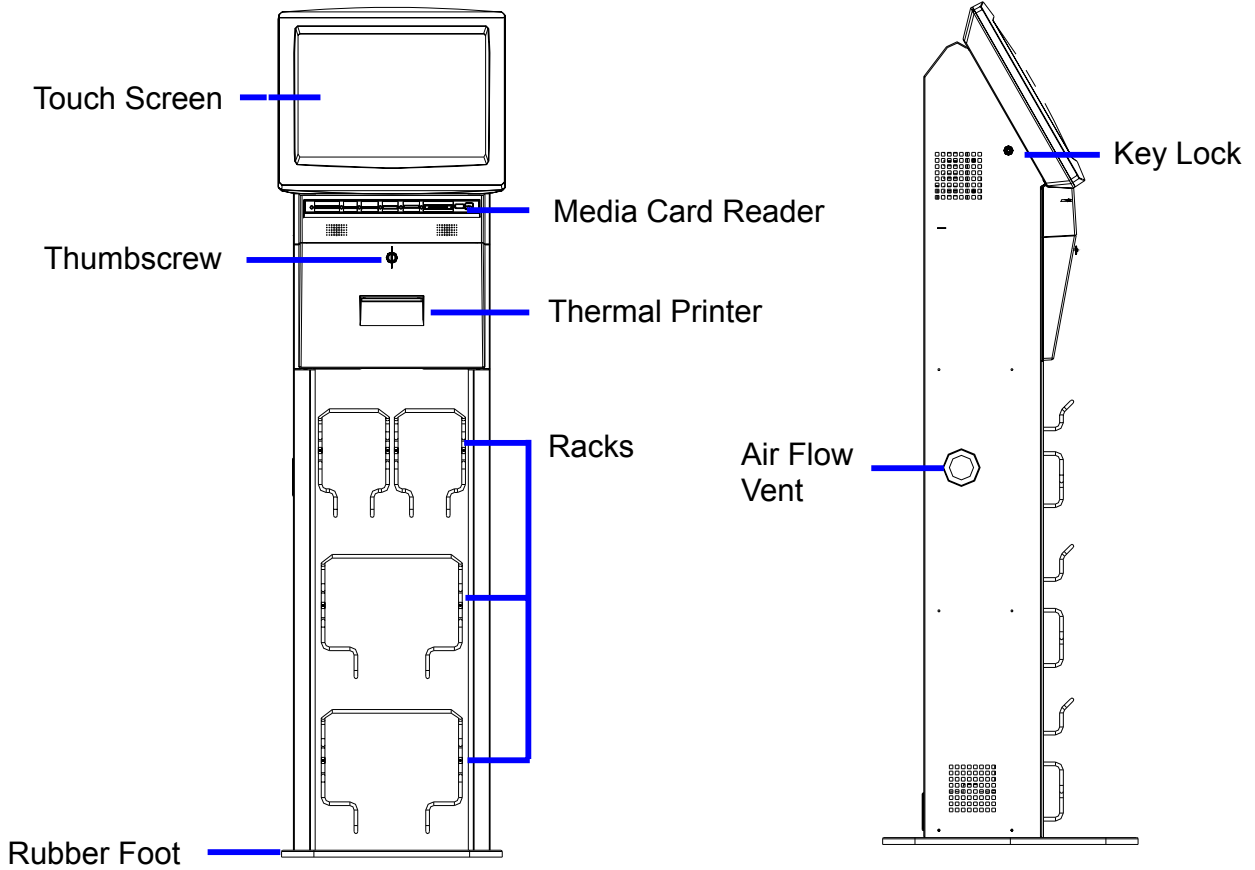


j. User Manual

## 2. System View

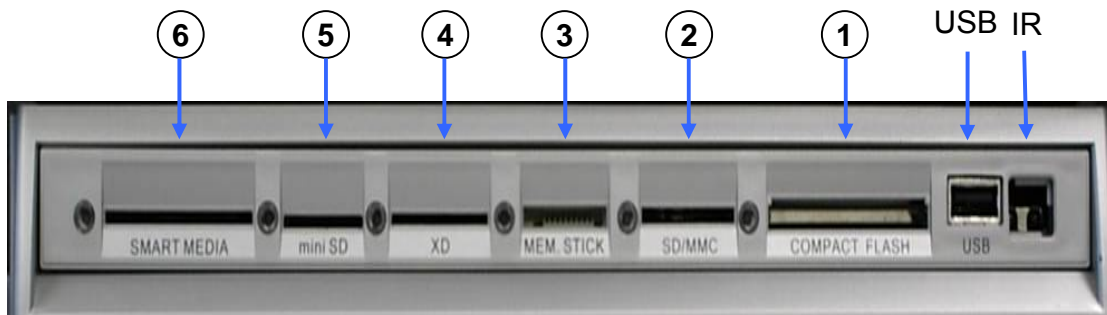
**Front View**

**Right Side View**





### 3. Media Card Reader



#### PRO-Gear XL6

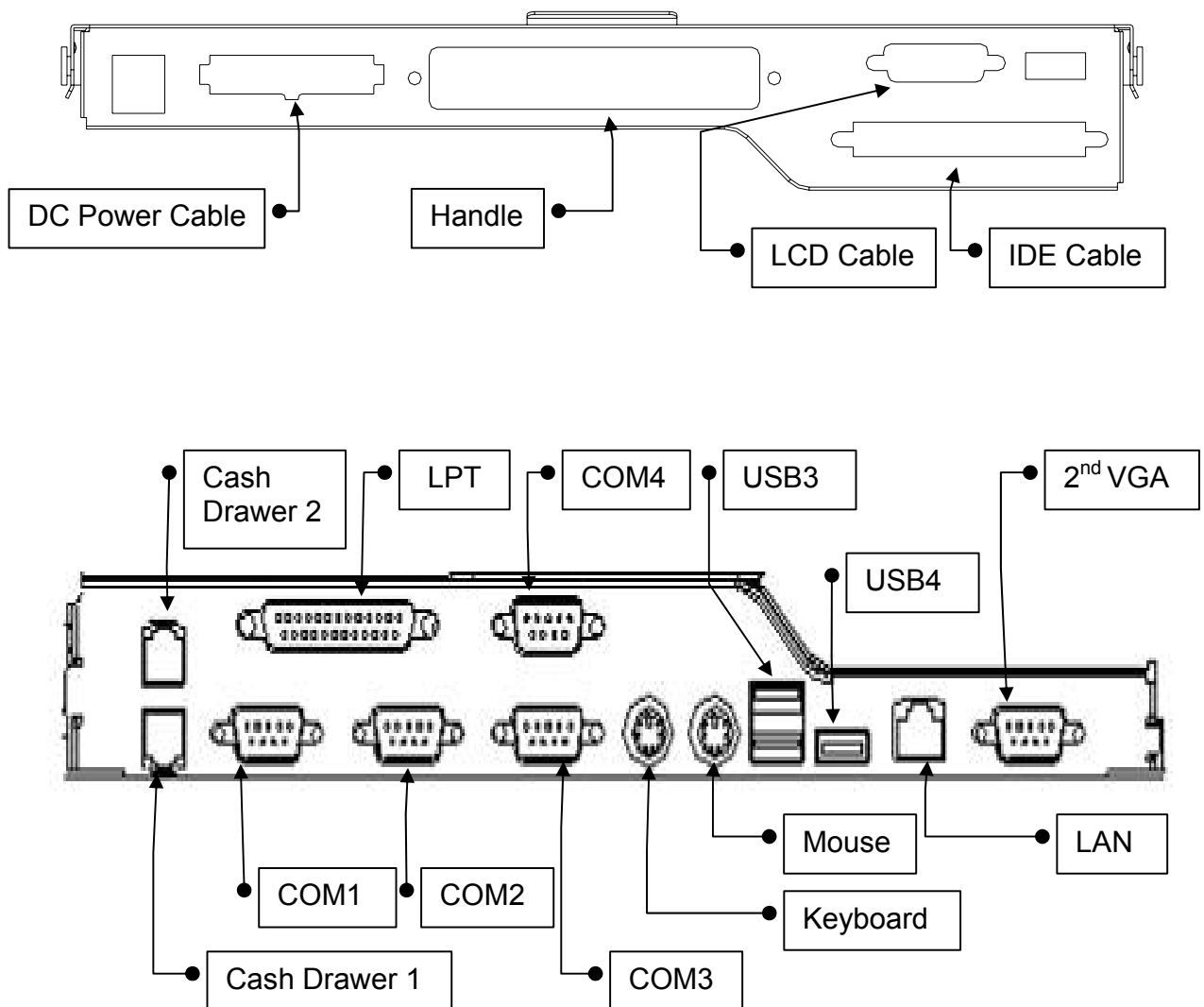
Insert the card into the reader gently all the way in, with the label on the card facing upwards. If the card has an arrow, make sure it points towards the reader. PRO-Gear XL6 supports the following widely used flash media cards:

①	<b>CF</b>	<ul style="list-style-type: none"> <li>➤ Compact Flash Type-I</li> <li>➤ Compact Flash Type-II</li> <li>➤ Compact Flash Extreme-III (133x)</li> <li>➤ MicroDrive</li> <li>➤ Magicstor</li> </ul>
②	<b>SD/MMC</b>	<ul style="list-style-type: none"> <li>➤ Secure Digital</li> <li>➤ Secure Digital V1.1 (133x)</li> <li>➤ MMC</li> <li>➤ MMC<i>plus</i> V4.0</li> <li>➤ MMC<i>mobile</i></li> <li>➤ RS-MMC</li> <li>➤ RS-MMC V4.0</li> </ul>
③	<b>MS</b>	<ul style="list-style-type: none"> <li>➤ Memory Stick PRO</li> <li>➤ Memory Stick PRO Duo</li> <li>➤ Memory Stick PRO MagicGate</li> <li>➤ Memory Stick</li> <li>➤ Memory Stick Duo MagicGate</li> <li>➤ Memory Stick Select</li> <li>➤ Memory Stick Duo</li> <li>➤ MagicGate Memory Stick</li> <li>➤ MagicGate Memory Stick Duo</li> <li>➤ Memory Stick Rom</li> <li>➤ Memory Stick Extreme III (133x)</li> </ul>
④	<b>xD</b>	<ul style="list-style-type: none"> <li>➤ xD-Picture Card</li> <li>➤ xD-Picture Card V1.2</li> </ul>
⑤	<b>miniSD</b>	<ul style="list-style-type: none"> <li>➤ miniSD</li> </ul>
⑥	<b>SM</b>	<ul style="list-style-type: none"> <li>➤ SmartMedia Card</li> </ul>

### NOTICE

- Please stop reading the card before removing it from the reader to avoid data loss or damage to the card or reader.
- Memory cards can only be inserted one way. Forcing the card may damage the card reader

## 4. I/O Connectors (Motherboard) View



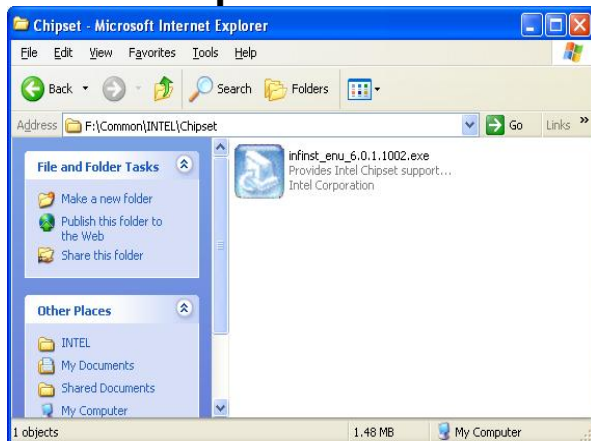
## 5. Drivers Installation

### 5.1. Driver List

Folder/File	File Description
<CD>:\K892_B81.htm	B81 Driver List
<CD>:\Common\INTEL\Chipset	Chipset Driver
<CD>:\Common\INTEL\USB2.0	USB 2.0 Driver
<CD>:\Common\INTEL\VGA\i85x	VGA Driver
<CD>:\Common\Elo_Touch	ELO Touch Screen Driver
<CD>:\Common\Lan_driver\R8139_810x	10/100Mb LAN Driver
<CD>:\Common\USB 20Audio\C-Media 20CM102	USB Interface C-Media102 Audio Driver
<CD>:\Common\Bluetooth\IVT_BlueSoleil	IVT BlueSoleil Bluetooth V1.1 Driver
<CD>:\Common\Bluetooth\WINCOMM_BCM2045A	WINCOMM BCM2045A Bluetooth V2.0 Driver
<CD>:\Common\printer\EPSON BA-T500	EPSON Thermal Printer Driver

The following procedures are for Windows 2000/XP, other platforms are similar.

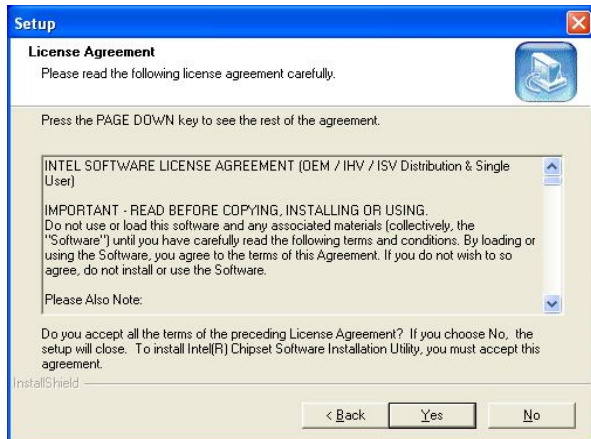
### 5.2. Chipset Driver Installation



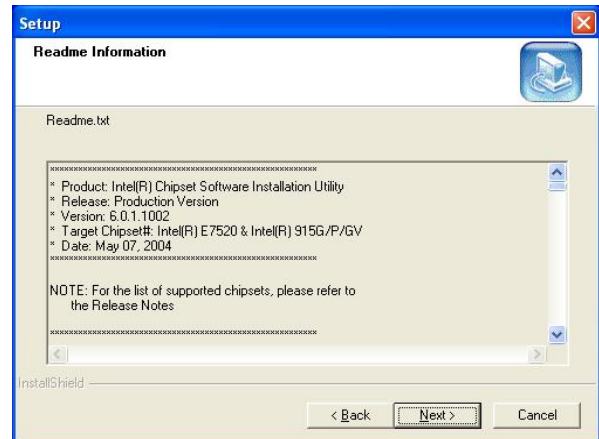
a. Double click “infinst\_enu\_6.0.1.1002” on the “My Computer” window.



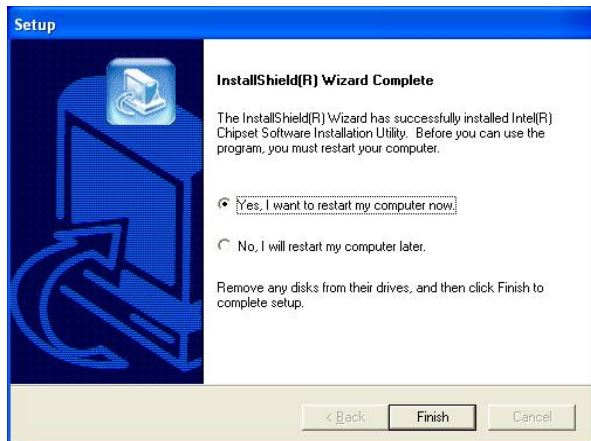
b. Click the “Next” button on the “Welcome” window.



c. Click the “Yes” button on the “License Agreement” window.



d. Click the ”Next” button on the “Readme Information” window.

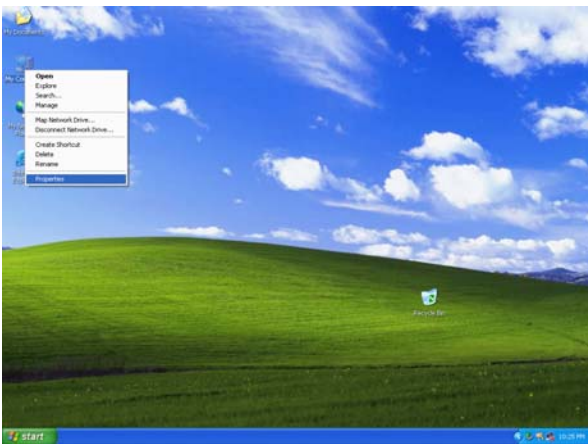


e. Click the “Finish” button and restart your system.

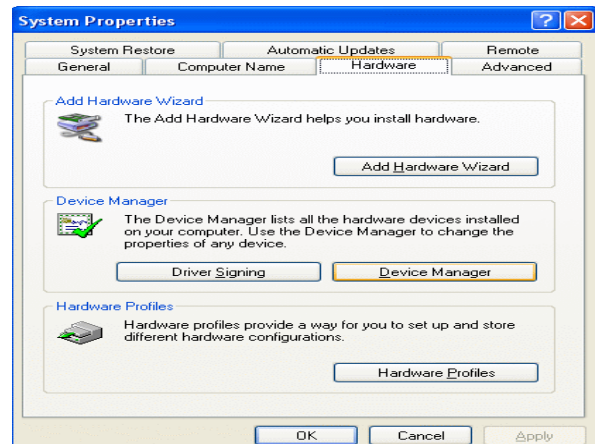
## 5.3. USB 2.0 Driver Installation

### OS Requirements

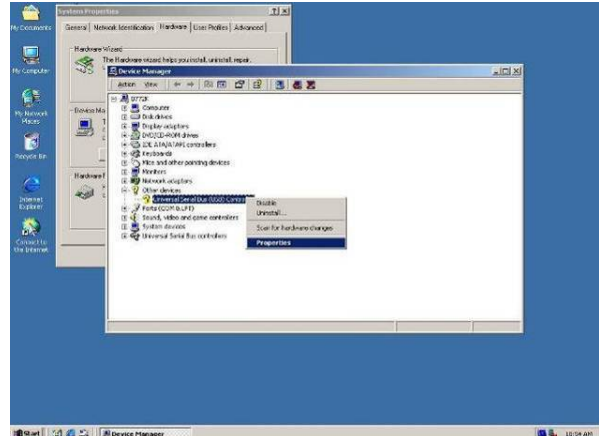
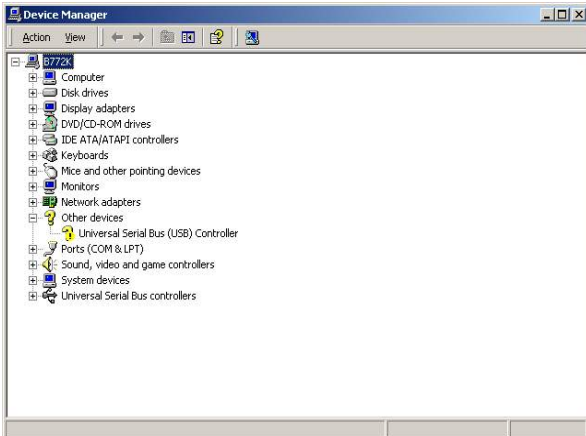
OS	USB 2.0 requirements
Windows XP	USB 2.0 drivers are provided in <a href="#">Service Pack 1</a> (SP1) for Windows XP, which is available through <a href="#">Windows Update</a> .
Windows 2000	USB 2.0 drivers are available through <a href="#">Windows Update</a> or Service Pack 4.
Windows 98SE/Me	USB 2.0 drivers are available on the <a href="#">Intel developer site</a> .
Windows 98 (Retail)	Developers and OEMs should contact <a href="#">Orange Ware</a> . For end-users, if your device does not ship with Windows 98 drivers, contact your device or system manufacturer. If USB 2.0 drivers are not available, your device will operate at USB 1.1 speeds
Linux	USB 2.0 support is available in <a href="#">kernel 2.4.19</a> or later development kernels, or in the 2.4.19 or later production kernel. <a href="#">More information</a> .



a. Right click "My Computer" on the windows desktop and select "properties".



b. Select "Hardware" → "Device Manager" on system properties.



c. Select "Other Devices" → "Universal Serial Bus (USB) Controller" → "Properties" in the Device Manager.



d. Select "Device" → "Update Driver..."

e. Click the "Next" button on the "Welcome" window.



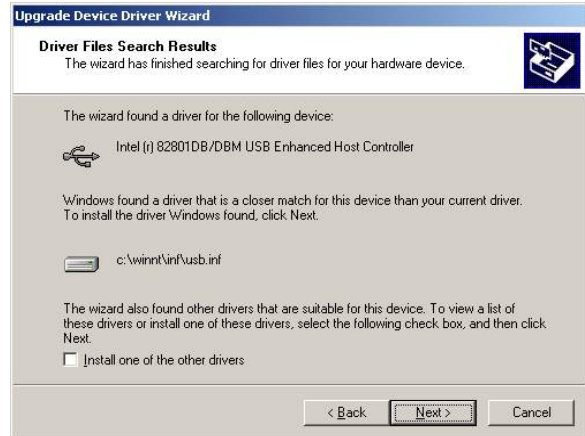
f. Select "Search for a suitable..." and click the "Next" button on the "Install Hardware Device Drivers" window.

g. Select "Specify a location" and click the "Next" button on the "Locate Driver Files" window.





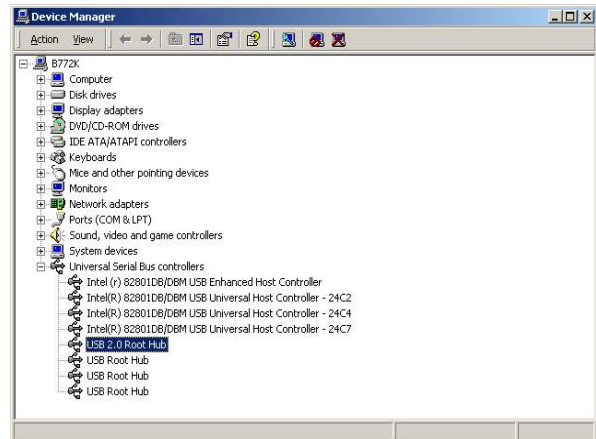
h. Press “Browse” to select driver and then click the “OK” button to next page.



i. Click the “Next” button on “Driver Files Search Results” window.

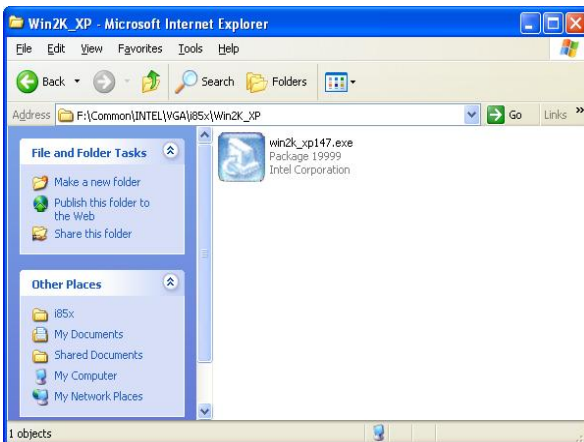


j. Click the “Finish” button to complete this process.

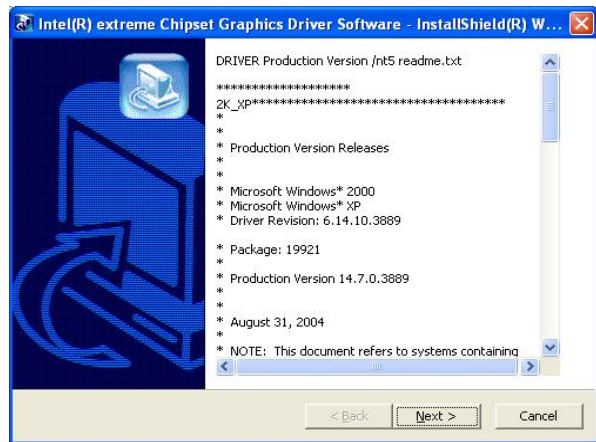


k. Finished.

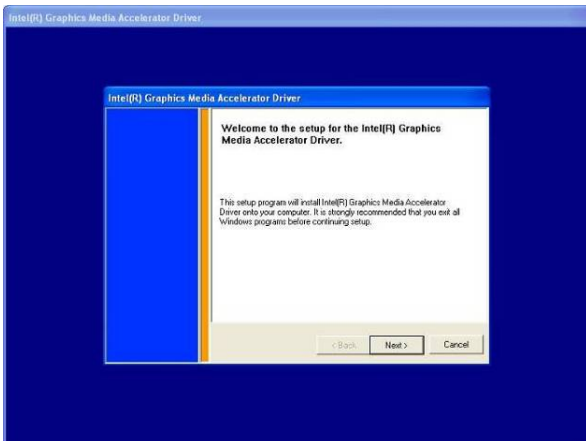
## 5.4. VGA Driver Installation



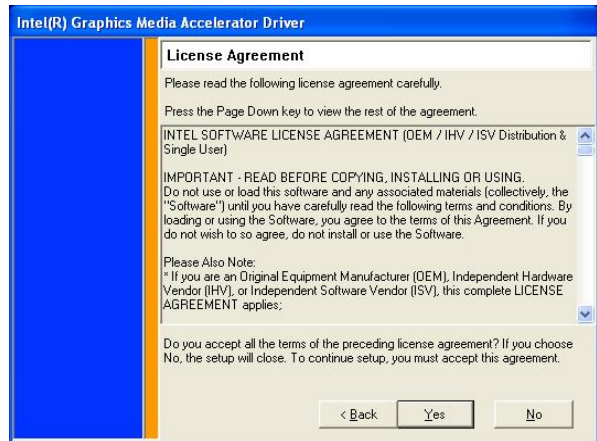
a. Double click “win2k\_xp147” on the “My Computer” window.



b. Click the “Next” button on the “Welcome” window.



c. Click the "Next" button on the "Welcome window".



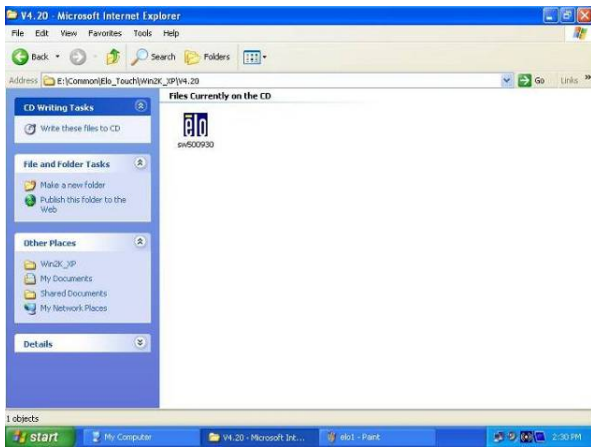
d. Click the "Yes" button on the "License Agreement" window.



e. Click the "Finish" button and restart your system.



## 5.5. ELO Touch Driver Installation



- a. Click "sw500930" on the My computer window.



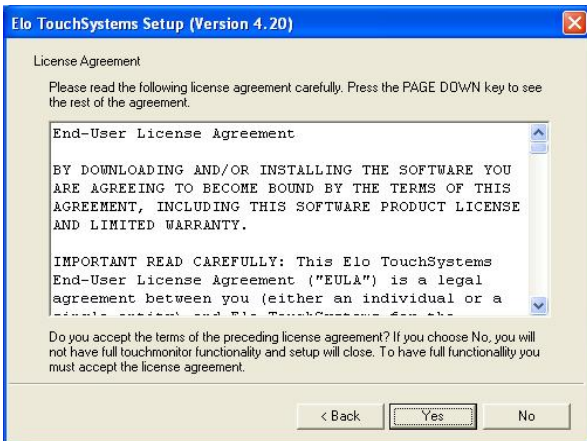
- b. Click the "OK" button on the Welcome window.



- c. Click the "Unzip" button on the WinZip Self-Extractor window.



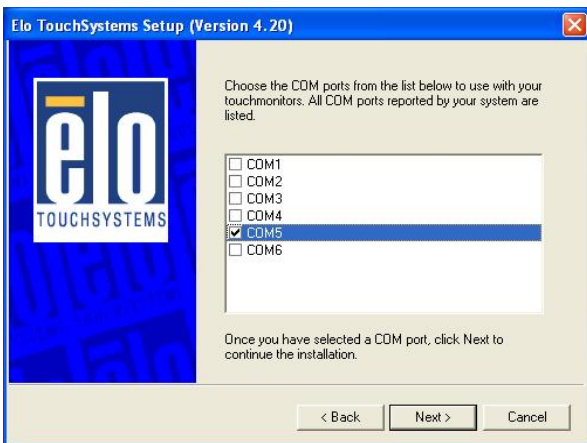
- d. Select "Install Serial Touchscreen Drivers" and then click the "Next" button on the Welcome window.



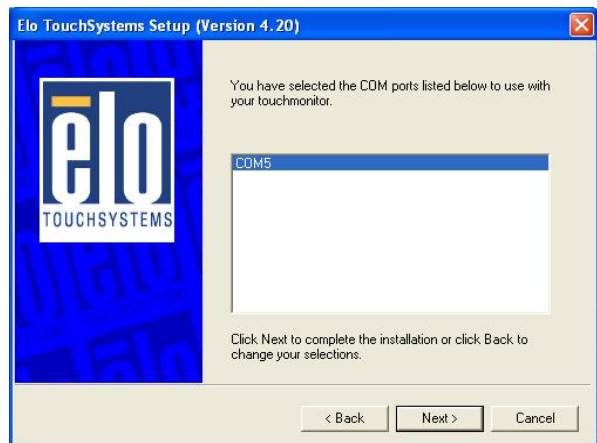
e. Click the “Yes” button on the License Agreement window.



f. Click the “Next” button on the on the “Select the COM ports...” window.



g. Select “COM5” and click the “Next” button on the Choose the COM ports... window.



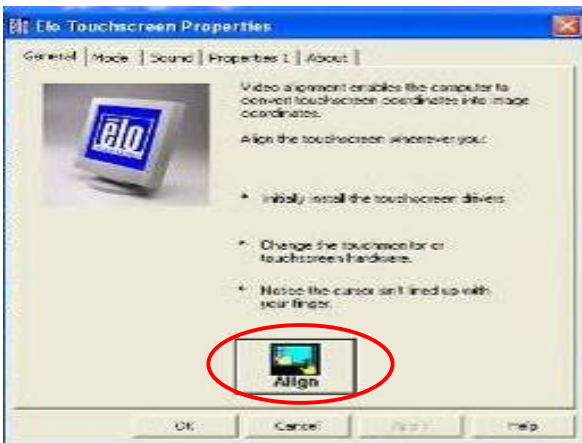
h. Click the “Next” button on the You have selected the COM ports... window.



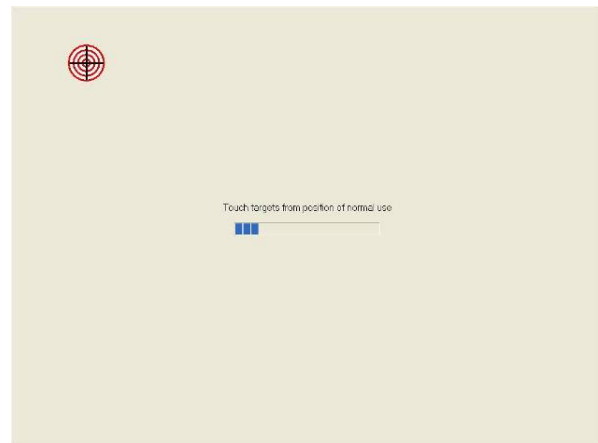
i. Click the “Finish” button on the Setup Complete window



j. Click the “Yes” button and restart your system.

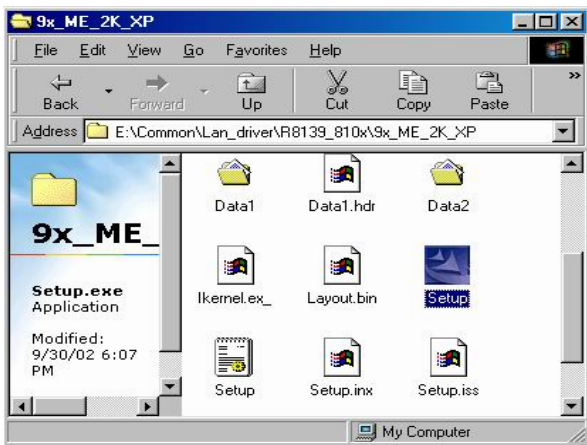


k. After the computer restarted, click “Align” on the Elo Touchscreen Properties window.

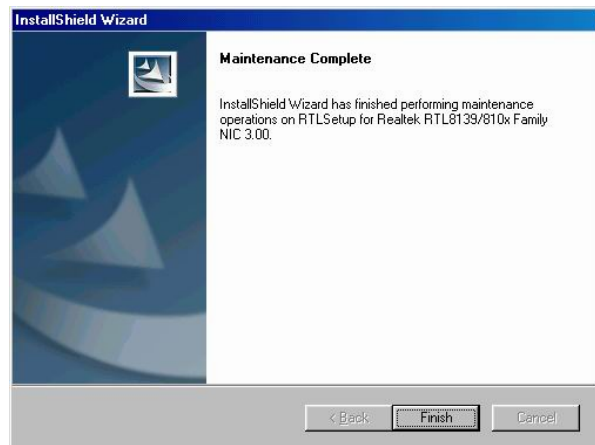


l. Calibrate three red points.

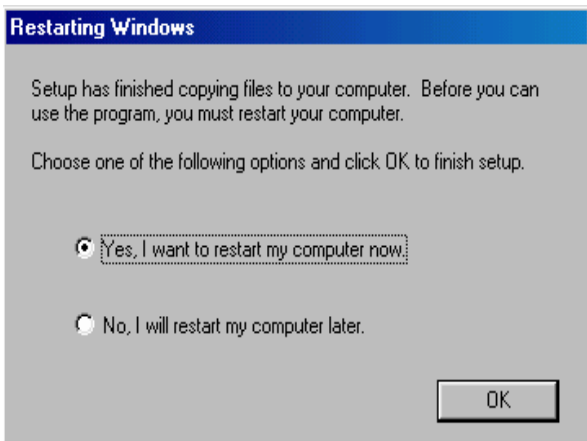
## 5.6. LAN Driver Installation



a. Double click "Setup" on the "My Computer" window.

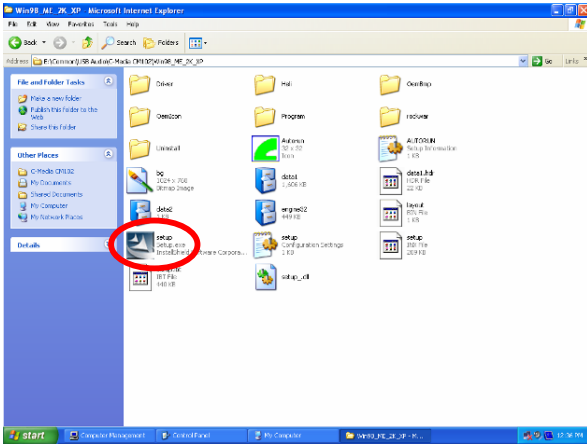


b. Click the "Finish" button on the "Maintenance complete" window.

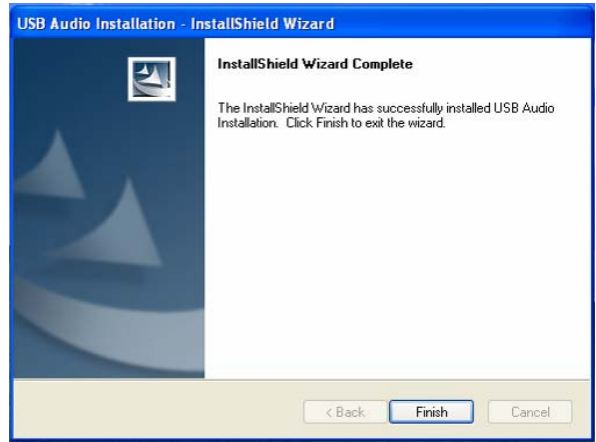


c. Click the "OK" button and restart your system.

## 5.7. Audio Driver Installation



a. Select "Setup" on the "My Computer" window.

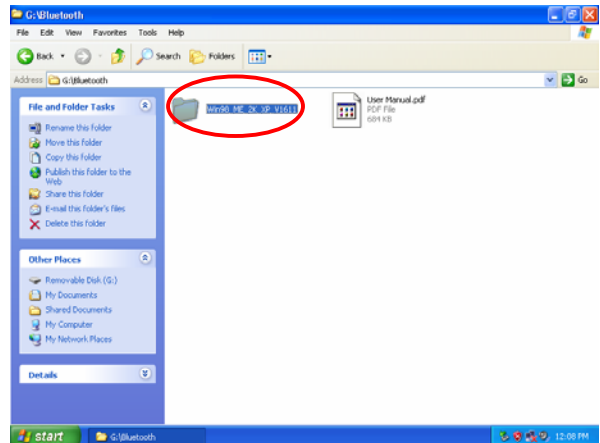


b. Click the "Finish" on the "USB Audio Installation-InstallShield Wizard" window.

## 5.8. Bluetooth Driver Installation

Touch Screen	DOS	
• ELO	Win9X WinNT4 Win2K_XP Linux	Ver.: 4.20
10/100Mb LAN	DOS WinNT3.51 WinNT4 Win9X_ME_2K_XP Linux WinCE3.0	
• Realtek RTL8139 / 810x		
Audio	Win98_ME_2K_XP	
• USB interface C-Media CM102		
Bluetooth v1.1 USB Dongle	Win98_ME_2K_XP	
• <b>IVT BlueSoleil Bluetooth</b>		
Bluetooth v2.0 USB Dongle	Win98_ME_2K_XP	
• WIDCOMM BCM2045A Bluetooth		
Thermal Printer		
• EPSON BA-T500	WinNT4.0_2K_XP	
• AP example: ◦ Printer States checker		
BIOS flash utility	DOS Windows	
Cash Drawer controller test utility (use IO port 0x4BB)	DOS	With C language source code
	Windows	

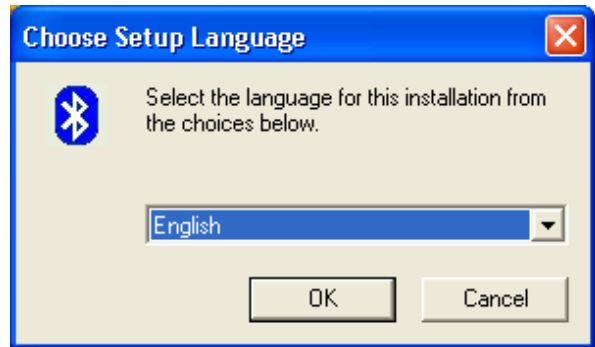
a. Click the "IVT BlueSoleil Bluetooth" on the "Manual list" window.



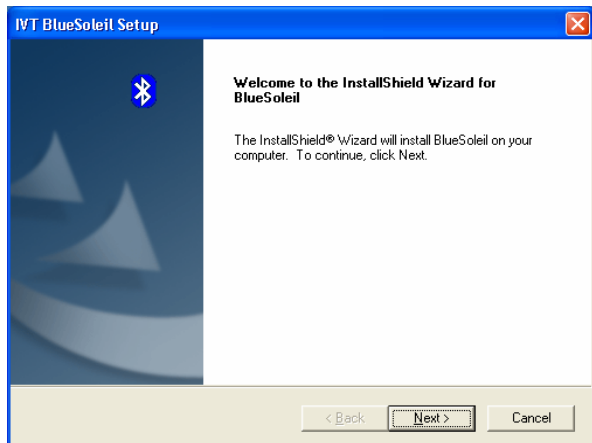
b. Click the "Win98\_ME\_2K\_XP\_V1611" on the "IVT\_BlueSoleil" window.



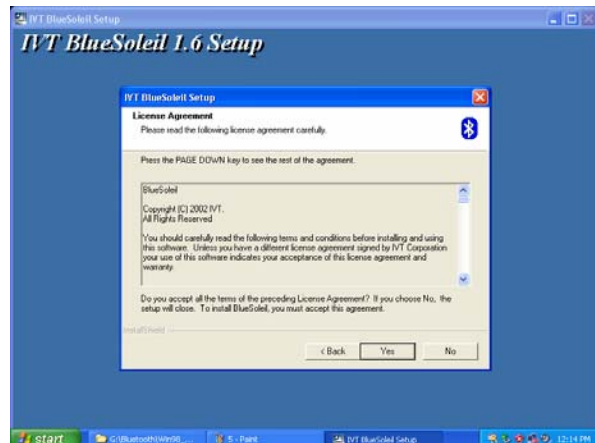
c. Click the "Setup" on the "Win98\_ME\_2K\_XP\_V1611" window.



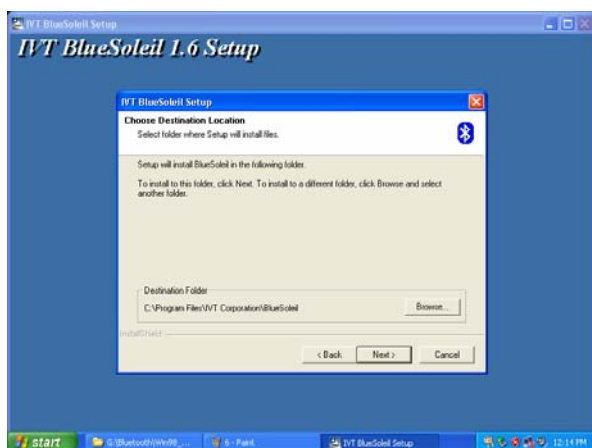
d. Select the language and then click the "OK".



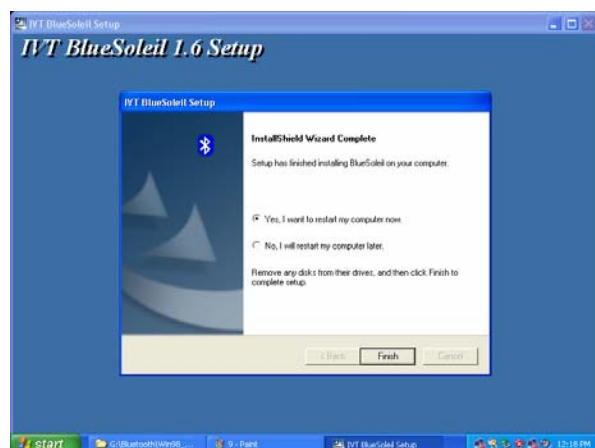
e. Click the "Next" on the "IVT BlueSoleil Setup" window.



f. Click the "Yes" on the "IVT BlueSoleil Setup" window.



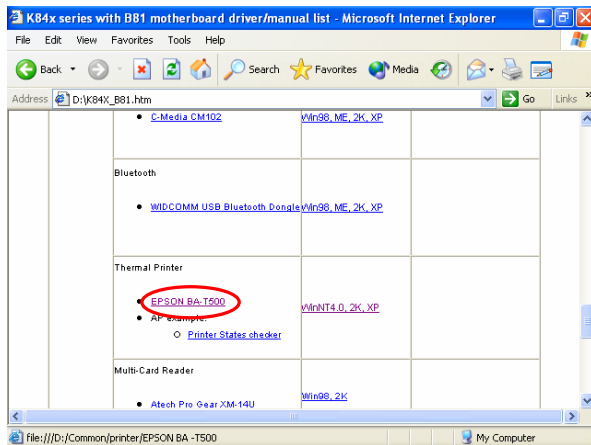
g. Click the "Next" on the "IVT BlueSoleil Setup" window.



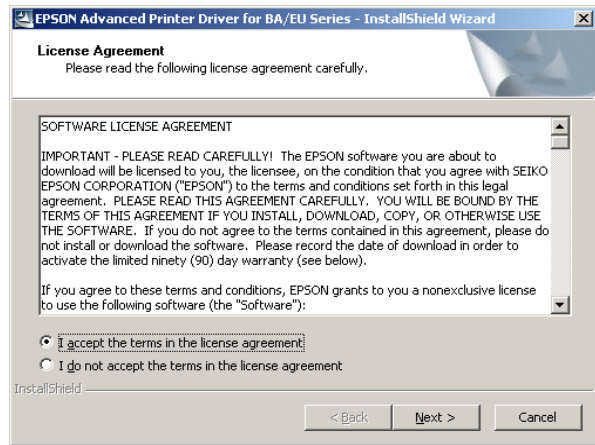
h. Click the "Yes" and restart your system.



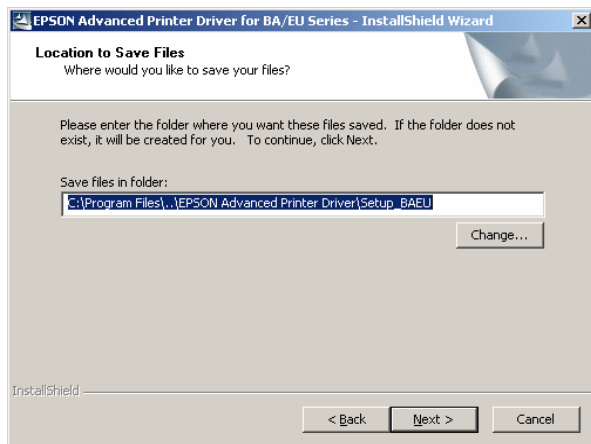
## 5.9. EPSON-BA-500 Thermal Printer Driver Installation



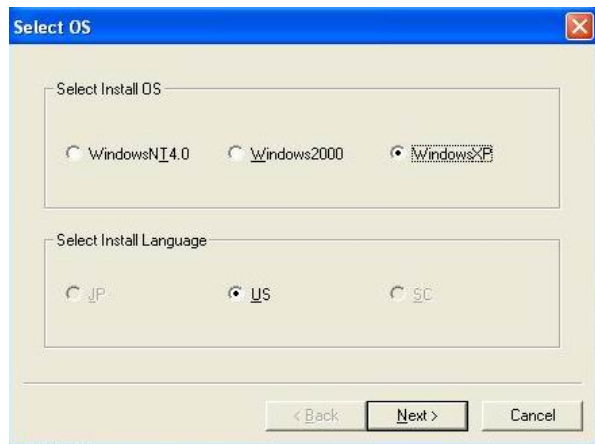
a. Click on the “EPSON-BA-T500” link on the window.



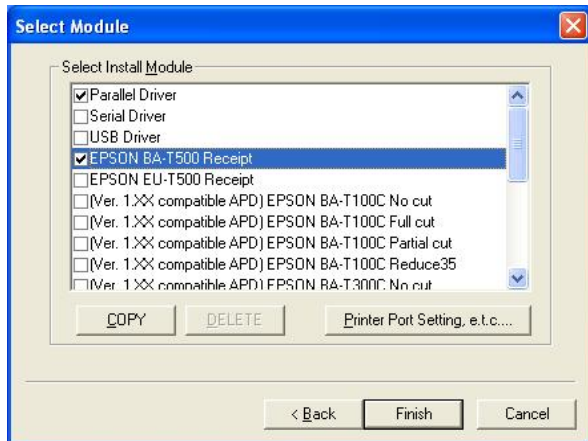
b. Select “I accept...” and click the “Next” button on the “License Agreement” window.



c. Click the “Next” on the “Location to Save Files” window.



d. Select your Operating system and click “Next” on the “Select OS window”.



e. Select "Parallel Driver" and "EPSON BA-T500" Receipt and click "Finish" on the "Select Module" window.



f. Click the "Yes" button and restart your system.

## 6. System Installation

### 6.1. HDD Installation



a. Insert the key into the lock and unlock the LCD module.



b. Lift the LCD module up.





c. Loosen the thumbscrew (1).



d. Open the drawer by pulling it towards you.



e. Remove the screws (2) of the card reader cover.



f. Remove the card reader cover screws (2) as shown in the picture.



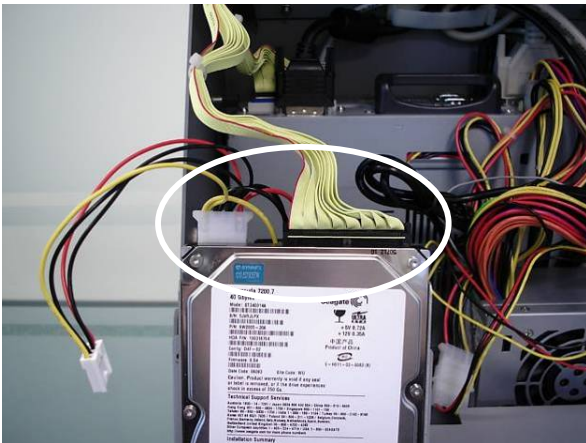
g. Remove the card reader cover.



h. Disconnect the USB cable (1) and power cable (1).



- i. Remove the screws (2) as shown in the picture.

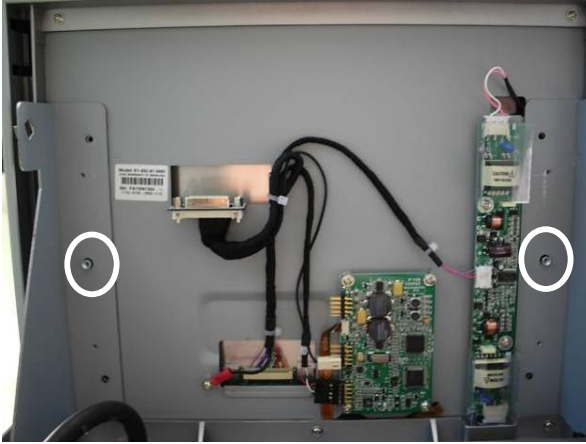


- j. Connect the IDE cable (1) and the power cable (1).

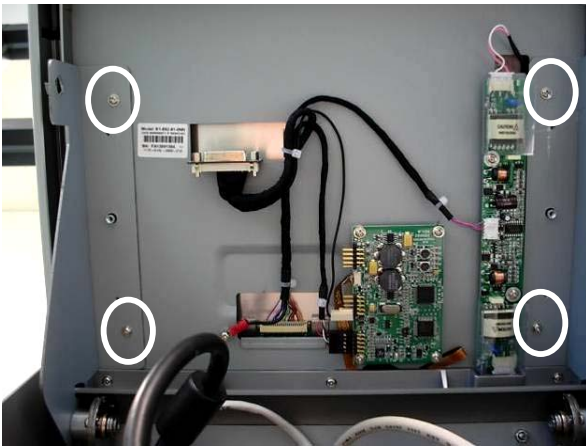


- k. Carefully place the HDD next to the fan. Tighten the screws (2).

## 6.2. LCD Panel Installation



- a. Carefully place the LCD module on the bracket. Two bolts lodge in the holes to prevent the LCD from sliding off (see picture).



- b. Fasten the screws (4).



- c. Connect the DVI cable (1). Finish LCD module installation.

### 6.3. Thermal Printer Installation



a. Loosen the thumbscrew (1).



b. Open the drawer by pulling it towards you.

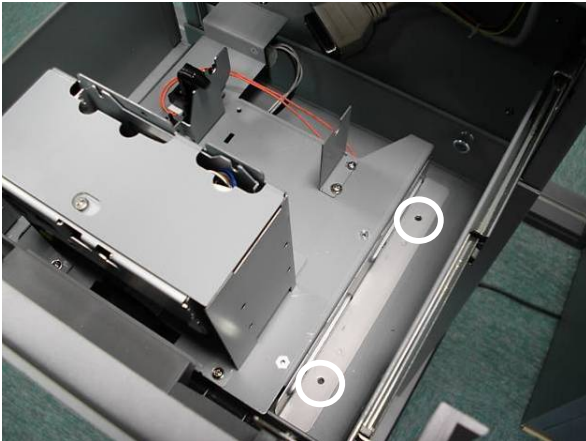


c. Remove the screws (2) of the right hand side bracket.

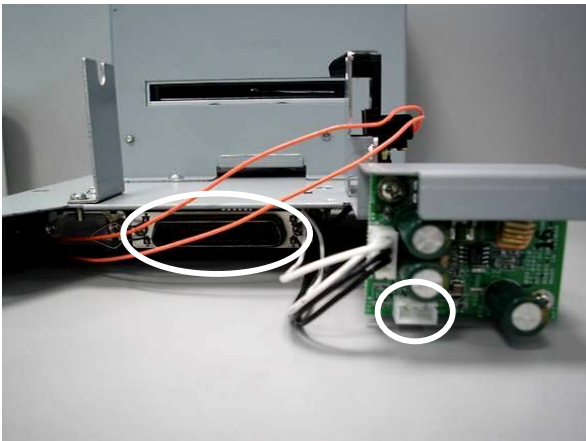




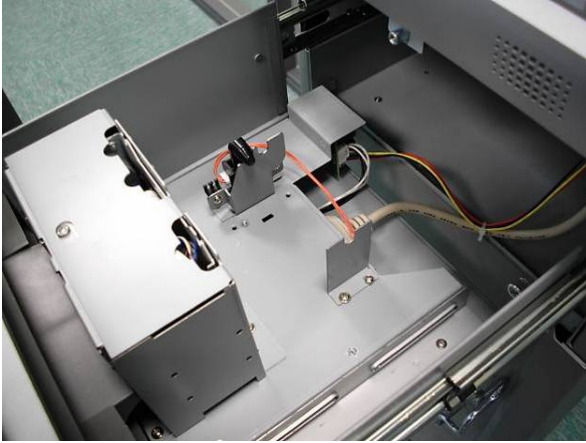
d. Two bolts lodge in the holes of the brackets as shown in the picture.



e. Fasten the screws (2).



f. Connect the power cable and printer cable of the rear thermal printer as shown in the picture.



g. Finish the thermal printer installation.

## 7. System Replacement

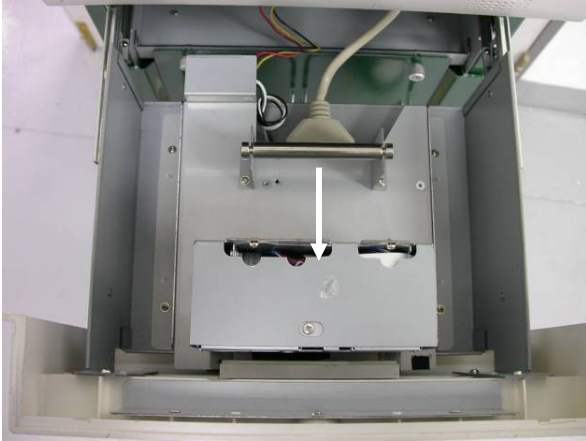
### 7.1. Load the Paper of the Thermal Printer



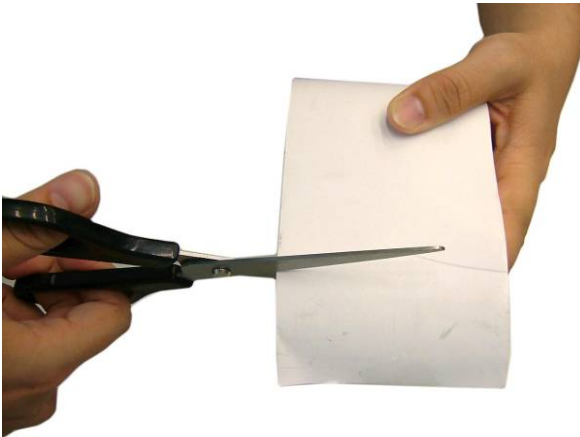
a. Loosen the screw (1).



b. Open the drawer by pulling it towards you.



c. Slide the thermal printer box towards the front of the drawer.



d. Cut away the first five (5) cm of the paper, to obtain a straight edge and remove the label at the end of the roll.



e. Put the paper holder through the paper roll.





- f. Keep the paper flat to load the paper into the printer slot. Do not fold the paper.

The paper will feed automatically through the printer (the system must be powered on).

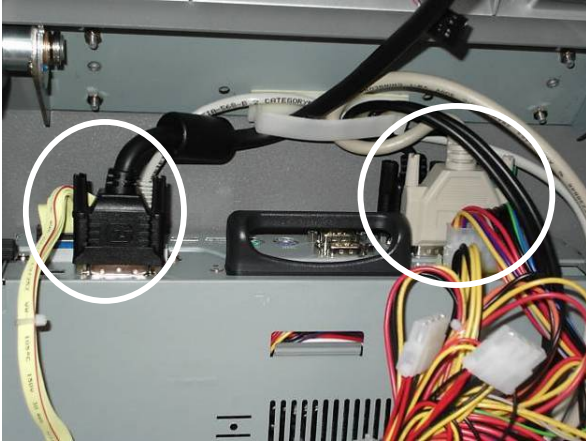
## 7.2. Motherboard Replacement



- a. Insert the key into the lock and unlock the LCD module.



- b. Lift the LCD module up.



- c. Disconnect all the cables:
- COM Port cables (2),
  - HDD cable (1)
  - power cable (1)
  - DVI cable (1)
  - LAN cable (1)
  - USB cable (1)

Please also refer to chapter 2.,  
I/O Connectors  
(Motherboard) View.



- d. Disconnect the USB  
cable (1) and power  
switch cable (1) as  
shown in the picture.



- e. Remove the screw (1)  
next to the chassis box.



f. Remove the chassis box by from the system by the handle.



g. Remove the screws (2) (one on each side).



h. Hold the handle and lift the cover.



- i. Disconnect all cables of the motherboard:
  - LCD cable (1)
  - Bridge cable (1)
  - USB cable (1)
  - Power cable (1)
  - IDE cable (1)
  - Flat 40P cable (1)
  - 20P/4P cable (1)
  - DVI cable (1)
  - Power cable (1) ◦



- j. Remove the screws (2) (one on each side). Slide the motherboard towards you and remove it.

### 7.3. Control Board and Inverter Board Replacement



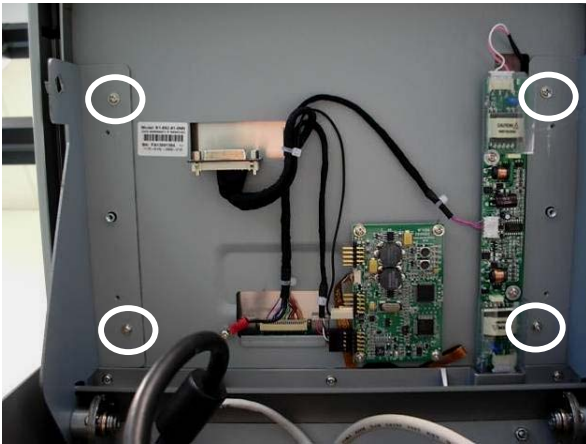
- a. Insert the key into the lock and unlock the LCD module.



b. Lift the LCD module up.



c. Disconnect the DVI cable (1) from the LCD Module.



d. Remove the screws (4) (one on each side).

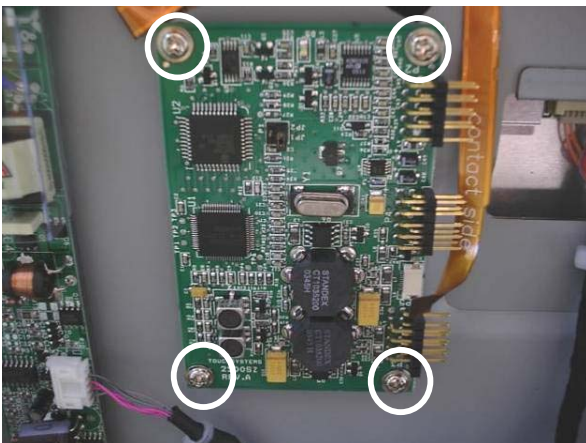




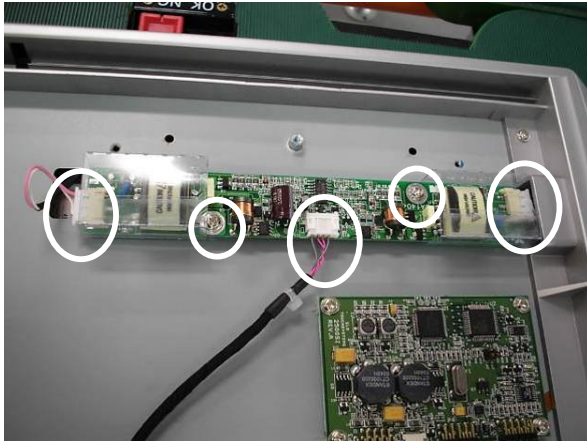
e. Carefully remove the LCD module.



f. Disconnect the T/S cable (1), the Control Board cable (1) and the 2P cable (1) from the control board.



g. Remove the screws (4) to replace the control board.



- h. Disconnect the LCD cables (3) and remove the screws (2) to replace the inverter board.

## 7.4. LCD and Touch Screen Replacement



- a. Remove the screws (5).



- b. Carefully press in the two sides to separate the back housing from the LCD chassis.



c. Carefully disconnect the T/S cable (1).



d. Remove the screws (6) of the LCD chassis to separate the LCD from the touch screen.



e. Replace the LCD ◦





- f. Remove the screws (12) of the brackets (4) to replace touch screen.

## 8. Specification

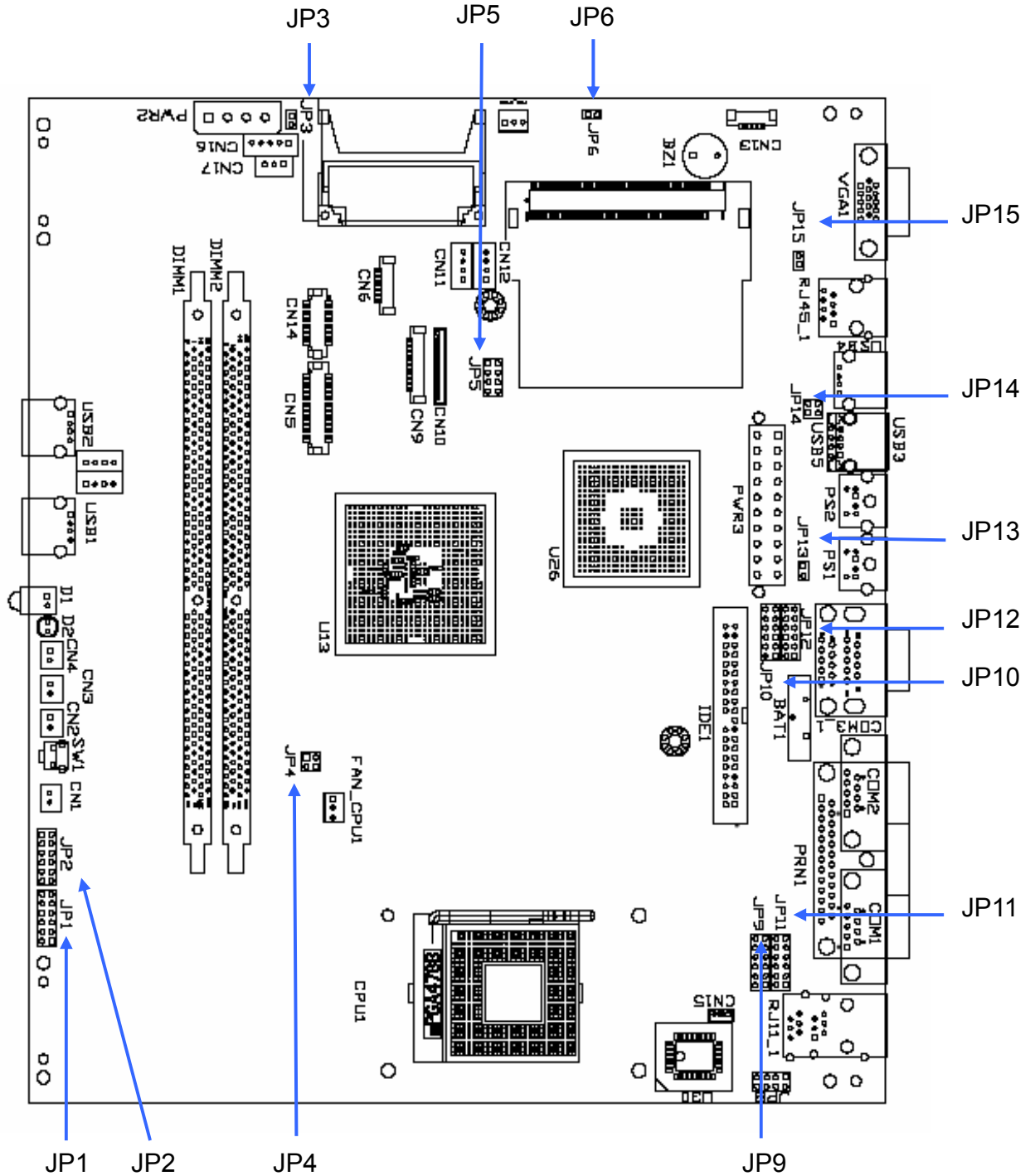
<b>Mainboard</b>	<b>B81</b>
CPU Supports	Intel P4 Celeron 2.5G
Core Logic	Intel 852GM and ICH4
System Memory	2 x DDR DIMM sockets supported with memory size up to 2GB
Graphic Memory	UMA Share Memory 8MB ~ 64MB
Mini PCI Socket	1 x Mini PCI socket supported
<b>LCD Touch Panel</b>	
LCD Size	15" TFT
Brightness	350 cd/m <sup>2</sup>
Maximal Resolution	1024 x 768
Touch Screen Type	Resistive / Saw (by request)
Tilt Angle (Degree)	60°
<b>Storage Devices</b>	
HDD	1 x 3.5" HDD Drive Bay
<b>Expansion</b>	
Mini-PCI Socket	1 x mini-PCI slot
<b>Internal I/O Ports</b>	
Internal Speaker	2 x 3W
PS/2 Keyboard	1
PS/2 Mouse	1
USB	4 x USB port (USB 2.0)
Serial / COM	4 (Pin 1 / 9 with 5V / 12V)
Parallel	1

<b>Internal I/O Ports</b>	
Serial / COM	4 x powered COM ports (pin 1 / pin 9 support +5V / +12V by Jumper)
LAN (10/100)	1 x RJ-45 Jack
VGA	1 x LCD Monitor interface (LVDS / Inverter / USB)
2 nd VGA	1 x male type connector with power
Cash Drawer Port	2 x RJ11 Cash Drawer with 12V / 24V
<b>Control / Indicator</b>	
Power Button	1
<b>Power</b>	
Power Supply	Internal 250W ATX switching mode power supply
<b>Environment</b>	
EMC & Safety	FCC, Class A, CE, LVD, BSMI
Operating Temperature	5°C ~ 35°C (41°F ~ 95°F)
Storage Temperature	-10°C ~ 60°C (14°F ~ 140°F)
Operating Humidity	10% - 90% RH non condensing
Storage Humidity	10% - 90% RH non condensing
<b>Peripheral</b>	
Thermal Printer	80mm Thermal Printer
Media Card Reader	Planar Flash Media Card Reader (with IrDA)
Chassis Lock Key	1
<b>Optional Module</b>	
Wireless LAN	USB Dongle
Bluetooth	USB Dongle
UPS	1
POP Shelf	1
Dimension (W x D x H)	370 x 193 x 1370mm / 14.6" x 7.6" x 53.9"
Weight	48.6kg / 107.14lb
OS Support	Windows 2000, XP

- This specification is subject to change without prior notice.

# 9. Jumper Settings

## Motherboard



## Jumper Setting

### 1. CPU Frequency setting

⊙ Factory Default Setting

Function	JP4 (SHORT)
FSB400	⊙1-2, 3-4
FSB533	3-4

### 2. Compact Flash Master/Slave setting

Function	JP3 (SHORT)
Master	⊙1-2
Slave	N/C

### 3. CMOS Operation mode

Function	JP6 (SHORT)
CMOS Normal	⊙N/C
CMOS Reset	1-2

To clear the CMOS:

- 1) Remove AC power from the unit.
- 2) Open the cabinet.
- 3) Change the JP6 jumper setting from N/C to 1-2.
- 4) Wait 1 minute.
- 5) Change the JP6 jumper setting back to N/C.
- 6) Close the cabinet.
- 7) Apply AC power and continue.

### 4. POWER USB Power setting (Reserved)

Function	JP14 (SHORT)
+24V	1-2
+12V	3-4

### 5. Cash Drawer Power setting

Function		JP8 (SHORT)
Cash Drawer 1	+12 V	⊙1-2
	+24V	3-4
Cash Drawer 2	+12 V	⊙5-6
	+24V	7-8

**6. COM1 Power setting**

Pin	Function	JP9(SHORT)
1	DCD#	⊙1-2
	+5V	3-4
	+12V	5-6
9	RI#	⊙7-8
	+5V	9-10
	+12V	11-12

**7. COM2 Power setting**

Pin	Function	JP11(SHORT)
1	DCD#	⊙1-2
	+5V	3-4
	+12V	5-6
9	RI#	⊙7-8
	+5V	9-10
	+12V	11-12

**8. COM3 Power setting**

Pin	Function	JP10(SHORT)
1	DCD#	⊙1-2
	+5V	3-4
	+12V	5-6
9	RI#	⊙7-8
	+5V	9-10
	+12V	11-12

**9. COM4 Power setting**

Pin	Function	JP12(SHORT)
1	DCD#	⊙1-2
	+5V	3-4
	+12V	5-6
9	RI#	⊙7-8
	+5V	9-10
	+12V	11-12

**10. CPU Voltage setting**

CPU Type	JP1 (SHORT)	JP2 (SHORT)
⊙P4	1-2, 3-4, 5-6, 7-8, 9-10, 11-12	N/C
P4-M (1.3V)	N/C	3-4, 9-10

### 11. LCD ID setting

Panel Number	Resolution	LVDS		JP5			
		Bits	Channel	1-2	3-4	5-6	7-8
0	640 x 480	18	Single	SHORT	SHORT	SHORT	SHORT
1	800 x 600	18	Single	SHORT	SHORT	SHORT	OPEN
2	1024 x 768	18	Single	SHORT	SHORT	OPEN	SHORT
3	1280 x 1024	24	Dual	SHORT	SHORT	OPEN	OPEN
4	1024 x 768	24	Single	SHORT	OPEN	SHORT	SHORT
5	800 x 600	24	Single	SHORT	OPEN	SHORT	OPEN

### 12. Second Display Power setting

Function	JP15 (SHORT)
+12V	1-2
NC	⊙1

### 13. Power Mode setting

Function	JP13 (SHORT)
ATX Power	⊙N/C
AT Power	1-2

Note:



OPEN



SHORT



# 10. BIOS Setting

## 1. BIOS Setup Utility

The BIOS setup defines how the system is configured. You need to run this program the first time you configure this product. You may need to run it again if you change the configuration.

You need to connect a PC keyboard to the keyboard connector to run the BIOS setup utility.

## 2. Starting the BIOS Setup

1. Turn on or reboot this product.
2. Press the DEL key immediately after the product is turned on, or press the DEL key when the following message is displayed during POST (the Power on Self-Test).

***Press DEL to enter SETUP.***

3. The main menu of the BIOS setup is displayed.
4. If the supervisor password is set, you must enter it here.

## 3. When a Problem Occurs

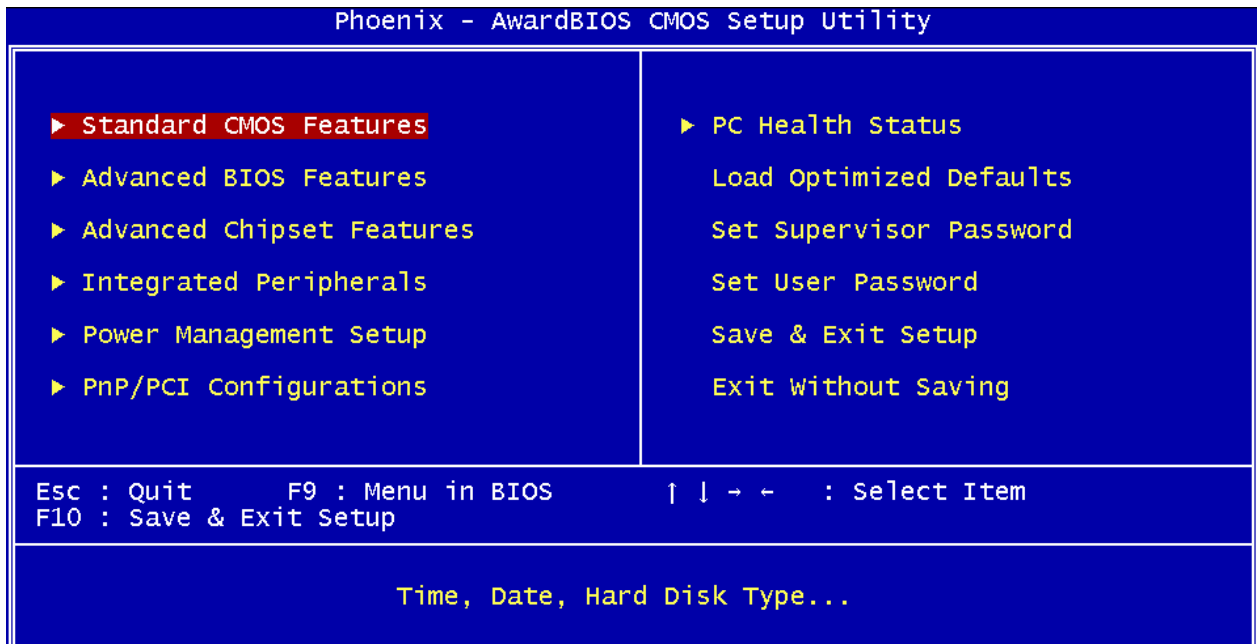
If, after making and saving system changes with the Setup utility, you find that this product no longer boots, start the BIOS setup and execute the following.

***Load Optimized Defaults***

## 4. BIOS Main Menu

When the BIOS Main Menu is displayed, the following items can be selected. Use the arrow keys to select items and the Enter key to accept and enter the sub-menu.

Note: The BIOS menu below is from B81 BIOS version B81FV10D.BIN. If you have a different BIOS version, the contents of the menu may differ.



### **Standard CMOS Features**

Use this menu for basic system configuration.

### **Advanced BIOS Features**

Use this menu to set the Advanced Features available on the system.

### **Advanced Chipset Features**

Use this menu to change the values in the chipset registers and optimize the system's performance.

### **Integrated Peripherals**

Use this menu to specify your settings for integrated peripherals.

### **Power Management setup**

Use this menu to specify your settings for power management.

### **PnP/PCI Configurations**

This entry appears if your system supports Plug and Play and PCI Configuration.

### **PC health status**

Displays CPU, System Temperature, Fan Speed, and System Voltages Value.

### **Load Optimized Defaults**

Use this menu to load the BIOS default values, i.e., factory settings for optimal performance system operations. While Award has designed the custom BIOS to maximize performance, the factory has the option to change these defaults to meet their needs.

**Set Supervisor Password**

Enables you to change, set, or disable the supervisor or user password.

**Set Password**

Change, set, or disable the password. It allows you to limit access to the system and to the setup, or just to the setup.

**Save & exit setup**

Save CMOS value changes to CMOS and exits setup.

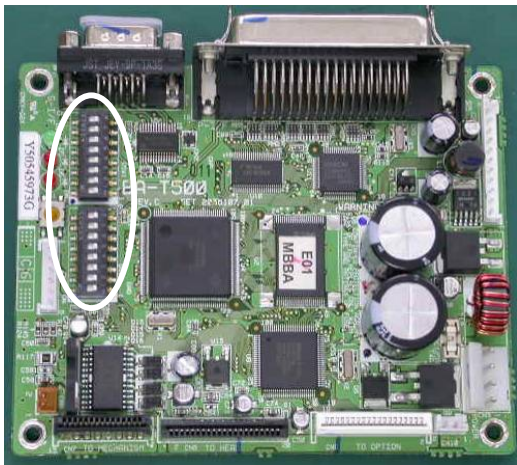
**Exit without saving**

Ignores all CMOS value changes and exits setup.

# 11. EPSON-BA-500 Thermal Printer DIP Switch settings

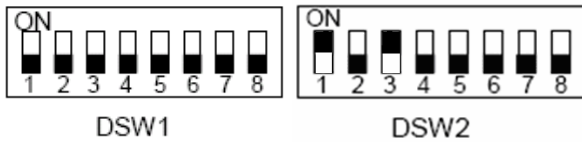
## 1. DIP Switches

There are two DIP switches on the printer control board, which is mounted on the rear panel of the system. To access the switches, please follow the instructions below



- a. The two DIP switches are located in the top right part of the printer control board.

The DIP switch number is printed on the board.



- b. The illustration shows the layout of the DIP switches.

## 2. DIP Switch 1 (DSW1)

SW No.	Function	ON	OFF	Factory setting
1	Black Mark sensor	Enabled	Disabled	Off
2	Interface selection	Refer to Table 2.1.		Off
3				Off
4	Serial interface handshaking	XON/XOFF	DTR/DSR or CTS/RTS	Off (*1)
5	Serial interface parity check	Yes	No	Off (*1)
6	Serial interface parity selection	Even	Odd	Off (*1)
7	Serial interface baud rate selection	Refer to Table 2.2.		Off (*1)
8				Off (*1)

(\*1) Effective only when the serial interface is selected.

**Table 2.1 Interface Selection**

Interface	Switch number	
	2	3
Parallel interface (IEEE 1284)	Off	Off
Serial interface (RS-232)	Off	On
Optional interface	On	On or Off

**Table 2.2 Baud Rate Selection**

Transmission Speed (bps)	Switch number	
	7	8
4800	On	On
9600	Off	On
19200	On	Off
38400	Off	Off

bps: bits per second

### 3. DIP Switch 2 (DSW2)

SW No.	Function	ON	OFF	Factory setting
1	Model type selection	Refer to Table 3.1		On
2				Off
3	Print density selection	Refer to Table 3.2		On
4				Off
5	Operation mode selection	Refer to Table 3.3		Off
6	Factory use			Off
7	I/F pin 6 reset signal-1	Enabled	Disabled	Off
8	I/F pin 6 reset signal-2	Enabled	Disabled	Off

**Table 3.1 Model selection**

Model	Switch Number	
	1	2
M-T540 (82.5 mm paper-width model) (640 dots, 3.25") (*1)	Off	Off
M-T530 (79.5 mm paper-width model) (576 dots, 3.15")	On	Off
M-T520 (60 mm paper-width model) (448 dots, 2.36")	Off	On
M-T510 (58 mm paper-width model) (432 dots, 2.28")	On	On

(\*1) The K892 is supplied with the M-T540 printer

**Table 3.2 Print Density Selection**

Level	Print Density	Switch Number	
		3	4
1	Slightly Light	On	On
2	Normal	Off	Off
3	Slightly dark	On	Off
4	Dark	Off	On

**Table 3.3 Operation Mode Selection**

Operation mode	Switch Number
	5
Hexadecimal dump	Off
Normal	Off